

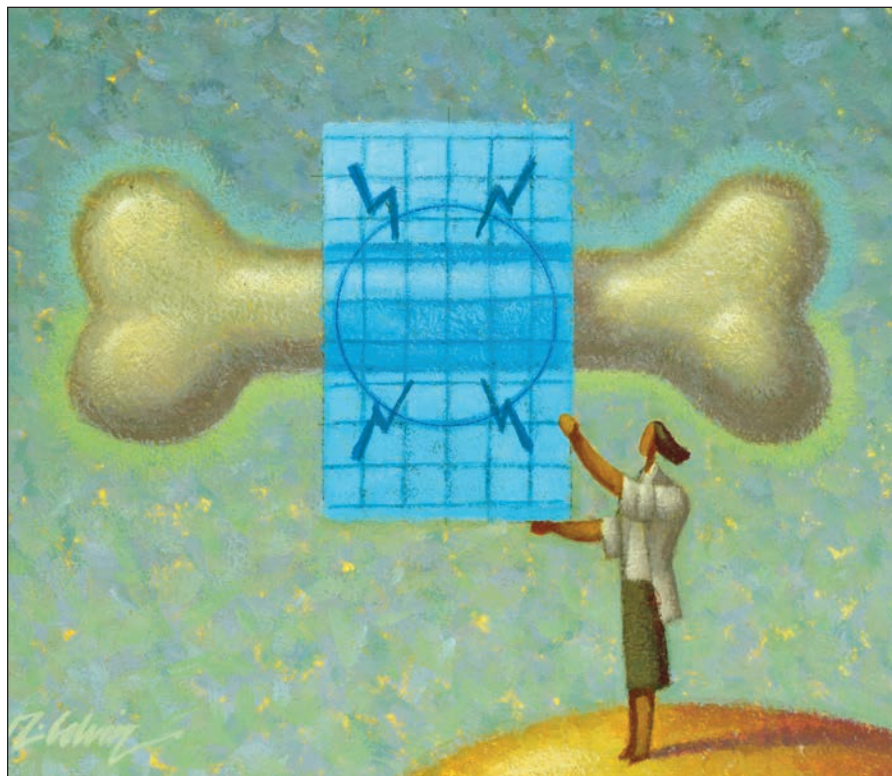
# CAREER INSIGHTS MD

THE MEDICAL STUDENT'S GUIDE TO RESIDENCIES

WINTER 2006/SPRING 2007

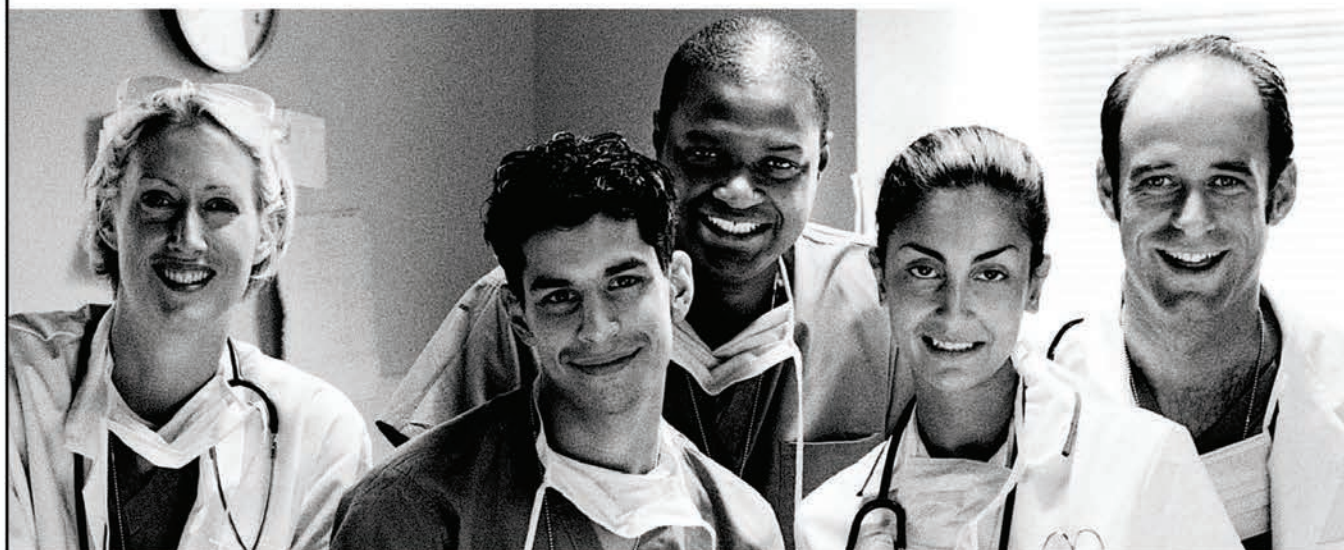
## PROFILES

In-Depth Descriptions of Residency Programs, Teaching Hospitals  
and Associations



The Print Companion to the [CareerMD.com](http://CareerMD.com) Website

# Future doctors need an Advocate.



**Learn at one of the nation's best hospitals and top teaching institutions:\*  
Advocate Lutheran General Hospital and Advocate Lutheran General Children's Hospital**

As the largest independent academic medical center in Illinois, our postgraduate training programs combine a commitment to clinical excellence and the latest research all in a supportive, scholarly learning environment. Affiliated with many of the top academic universities and medical schools in Chicagoland, we offer an extensive selection of residency and fellowship training programs to meet your educational needs.

Each year, more than 75 medical students choose Lutheran General Hospital to complete their residency and fellowship training in specialty programs such as family medicine, internal medicine, obstetrics/gynecology, pediatrics, psychiatry, emergency medicine, surgery, neonatal/perinatal medicine, pediatric critical care medicine, cardiology, gastroenterology, geriatrics and hematology/oncology.

Giving future doctors the skills and expertise to care for patients is what we do best. To learn more about the graduate medical education programs at Advocate Lutheran General Hospital and how we can meet your educational goals, call us at 847-723-8040 or visit us on-line at [www.advocatehealth.com/residency](http://www.advocatehealth.com/residency).



\*Advocate Lutheran General Hospital is one of only three hospitals to be named 10 times in the last 11 years as "one of the 100 Top Hospitals and among the 15 top major teaching institutions in the nation" by Solucient.

Take our virtual tour and hear what our residents are saying about us!

**[www.advocatehealth.com/residency](http://www.advocatehealth.com/residency)**

# CAREER INSIGHTS

## THE MEDICAL STUDENT'S GUIDE TO RESIDENCIES

WINTER/SPRING 2007

### MULTIPLE SPECIALTIES

Advocate Lutheran General Hospital, <i>Park Ridge, IL</i> .....	37
Akron General Medical Center, <i>Akron, OH</i> .....	38
Baptist Health System, <i>Birmingham, AL</i> .....	1
Botsford General Hospital, <i>Farmington Hills, MI**</i> .....	2
Freeman Health System, <i>Joplin, MO**</i> .....	2
Genesys Regional Medical Center, <i>Grand Blanc, MI**</i> .....	2
Grand Rapids Medical Education & Research Center, <i>Grand Rapids, MI</i> .....	4
Greenville Hospital System, <i>Greenville, SC</i> .....	4
Henry Ford Wyandotte Hospital, <i>Wyandotte, MI**</i> .....	3
Michigan State University College of Osteopathic Medicine, <i>East Lansing, MI**</i> .....	5
Michigan State University Kalamazoo Center for Medical Studies, <i>Kalamazoo, MI**</i> .....	7
Millcreek Community Hospital, <i>Erie, PA**</i> .....	5
North Shore - Long Island Jewish Health System, <i>New York City and Long Island, NY</i> .....	6
St. Joseph Health Center, <i>Warren, OH**</i> .....	7
Summa Health System, <i>Akron, OH**</i> .....	8
University of New England, <i>Biddeford, ME**</i> .....	9

### EMERGENCY MEDICINE

Lehigh Valley Hospital, <i>Bethlehem, PA**</i> .....	9
Maimonides Medical Center, <i>Brooklyn, NY</i> .....	9

### FAMILY MEDICINE

Kingman Regional Medical Center, <i>Kingman, AZ**</i> .....	10
Saint Joseph Regional Medical Center, <i>South Bend, IN**</i> .....	11
Spartanburg Family Medicine Residency Program, <i>Spartanburg, SC</i> .....	12
St. John West Shore Hospital, <i>Westlake, OH**</i> .....	13
Union Hospital Family Medicine Residency, <i>Terre Haute, IN</i> .....	14

### INTERNAL MEDICINE

Baptist Health System, <i>Birmingham, AL</i> .....	15
Maricopa Integrated System/Maricopa Medical Center, <i>Phoenix, AZ</i> .....	16
St. John West Shore Hospital, <i>Westlake, OH**</i> .....	17
SUNY Upstate Medical University, <i>Syracuse, NY</i> .....	18
University at Buffalo (Catholic Health System - Sisters of Charity), <i>Buffalo, NY</i> .....	19
University of Nebraska Medical Center, <i>Omaha, NE</i> .....	19
University of Southern California, <i>Los Angeles, CA</i> .....	20

### INTERNAL MEDICINE/PEDIATRICS

University of Nebraska Medical Center, <i>Omaha, NE</i> .....	20
---	----

### MEDICAL GENETICS

National Institutes of Health, <i>Bethesda, MD</i> .....	21
--	----

### OBSTETRICS & GYNECOLOGY

Grand Rapids Medical Education & Research Center, <i>Grand Rapids, MI</i> .....	21
Saint Francis Hospital and Medical Center, <i>Hartford, CT</i> .....	22
University of Arkansas, <i>Little Rock, AR</i> .....	22
University of Tennessee College of Medicine, <i>Chattanooga, TN</i> .....	23



**PATHOLOGY**

Baptist Health System, *Birmingham, AL*.....23  
 University of Minnesota, *Minneapolis, MN*.....24  
 New York Presbyterian Hospital - Cornell Center,  
*New York, NY*.....25

**PEDIATRICS**

Miami Children’s Hospital, *Miami, FL* .....25

**PREVENTIVE MEDICINE**

University of Texas Medical Branch, *Galveston, TX* .....26

**PSYCHIATRY**

Banner Good Samaritan Medical Center, *Phoenix, AZ* .....27  
 The Institute of Living/Hartford Hospital, *Hartford, CT*.....28  
 University of Connecticut, *Farmington, CT* .....28  
 University of Massachusetts Medical School, *Worcester, MA*..29

**RADIOLOGY**

Baptist Health System, *Birmingham, AL* .....30

**SURGERY**

Baptist Health System, *Birmingham, AL* .....32  
 Baystate Medical Center, *Springfield, MA*.....33  
 St. Elizabeth’s Medical Center, *Brighton, MA* .....33  
 St. Joseph Mercy-Oakland, *Pontiac, MI*.....34  
 Tufts New England Medical Center, *Boston, MA*.....34  
 Yale-New Haven Medical Center, *New Haven, CT* .....35

**TRANSITIONAL YEAR**

Baptist Health System, *Birmingham, AL* .....36

**MEDICAL STUDENT PROGRAM**

Child Family Health International, *San Fransico, CA*.....36

**ORGANIZATIONS, ASSOCIATIONS & OTHER ADVERTISERS**

American Academy of Orthopaedic Surgeons.....31  
 The American Association for the Surgery of Trauma,  
*Chicago, IL*.....31  
 American Psychiatric Association..... Outside Back Cover  
 The Doctor Job .....14  
 The Gerontological Society of America,  
*Washington, DC*.....10  
 The Intersociety Council for Pathology Information,  
*Bethesda, MD*.....24  
 The Physician’s Survival Guide for the Hospital..... Index  
 Society for Vascular Surgery.....38

**PERSPECTIVES**

Medical Student Perspectives: “The New York City Free Clinic:  
 A Model for Comprehensive Free Healthcare” .....39

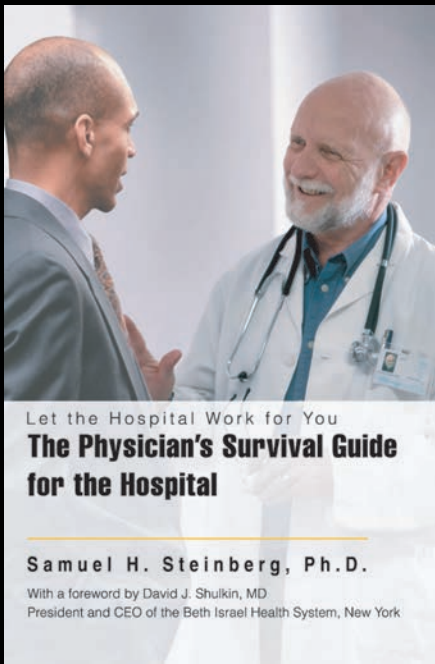
Just Published...

# The Physician’s Survival Guide for the Hospital

by Samuel H. Steinberg, Ph.D.

A workplace guide for medical students, residents, fellows, and all physicians who want to enhance their understanding of the hospital.

**Let the Hospital Work for You**



**Available for \$11.95 at Amazon.com, BarnesandNoble.com, and iUniverse.com.**

**Visit [www.physiciansurvivalguide.com](http://www.physiciansurvivalguide.com)**

\*\* Includes osteopathic or dually-accredited programs

# BAPTIST HEALTH SYSTEM, INC.

Birmingham, AL

## FACTS AT A GLANCE

- All residency programs are fully accredited by the Accreditation Council for Graduate Medical Education.
- 2 hospital teaching program offers variety of faculty in every major medical specialty as well as unique educational opportunities due to the demographics and diversity of the patient populations.
- Competitive salary and benefits package for residents. Non-salary benefits include book allowance, educational conference allowance, board certification course allowance and a generous subsidy for food and housing.
- The 2 teaching hospitals combined account for more than 59,000 ER visits each year and over 35,000 admissions.
- Excellent practice opportunities, as well as Fellowship positions obtained by graduates of BHS residency programs.

## RESIDENCIES

- Anatomic and Clinical Pathology
- Diagnostic Radiology
- General Surgery
  - Categorical
  - Preliminary
- Internal Medicine
  - Categorical
  - Preliminary
- Transitional Year



**ELIZABETH ENNIS, M.D., FACP,**  
Vice President,  
Medical Education and Research

We welcome your interest in the residency programs at Baptist Health System, Inc. We would like to introduce you to one of the very best community based teaching programs in the country. Medical Education is an important and integral part of the overall mission and activity of Baptist Health System (BHS). As an underlying principle, BHS recognizes that quality patient care is greatly enhanced by residency training programs in which bright, inquisitive, and energetic physicians and students actively pursue the study of medicine. Baptist Health System demonstrates its commitment to this concept by allocating extensive resources for the development and maintenance of excellent postgraduate training programs and outstanding student clerkships.

Our residency programs are conducted at our two teaching hospitals in Birmingham: Trinity Medical Center on the east side and Princeton Baptist Medical Center on the west side of the city. Both hospitals are large, progressive, fully-accredited tertiary-care institutions, which serve very different patient populations because of their own unique histories, demographics, and referral patterns. This inherent diversity broadens the patient base and physician faculty available for clinical teaching. Our full-time faculty members have extensive academic experience and are totally devoted to providing the best education possible for our residents and rotating students. In addition, more than 240 clinician educators volunteer substantial time and expertise to teaching our residents the needed skills to provide exceptional patient care.

We believe that the learning environment at BHS is among the best anywhere. Professional and personal support is readily available through Medical Education offices at both locations, and appropriate quarters are provided for on-call residents and students. Excellent medical libraries are accessible at both hospitals, which complement the exceptional ancillary services of our institutions. BHS residents are actively involved in scholarly activity, culminating in the presentation of their work at the BHS Resident Research Day as well as regional and national meetings.

## FOR MORE INFO, CONTACT:

Baptist Health System, Inc.  
Kathy Wright, Housestaff Coordinator  
Medical Education  
800 Montclair Road  
Birmingham, AL 35213  
205-592-1591 or 800-247-7404  
kathy.wright@bhsala.com

We invite your inquiries and application to our residency programs. Baptist Health System offers a firm commitment to excellence in medical education and training. We trust that you will find BHS to be the place where you will recognize your greatest potential in both the art and science of medicine.

## ABOUT BIRMINGHAM

Birmingham is one of the South's youngest and most dynamic cities. In just five hours you could drive to the white sands of the Gulf Coast. Or, add an hour the other way and you could be in the Great Smokey Mountains.

Blessed with a beautiful terrain and a moderate climate, Birmingham is a big city coated with the hospitality of the South.

Top entertainment can be found throughout the city and the area. For the art enthusiast, the Museum of Art regularly hosts world-class exhibits. Two major entertainment facilities of note in Birmingham are the Birmingham-Jefferson Civic Center, a large sports, entertainment and convention/exhibition complex, and the Verizon Wireless Music Center, which features top name artists of all areas of music.

For picnics, hikes and other outdoor activities, there's Oak Mountain State Park, which is the largest in Alabama's state park system, Tannehill Historical State Park, established as a state memorial to Alabama's iron and steel industry and Ruffner Mountain Nature Center, the nation's second largest urban nature preserve.

Birmingham has a wealth of activities for the sports fan. Birmingham is the home of the Barons baseball team, and the Steeldogs Arena Football Team. There is also golf, NASCAR racing at Talladega Super Speedway, sports car and motorcycle racing at Barber Motorsports Park. Lest we forget college sporting events, UAB is in the city and the University of Alabama and Auburn University are only a short drive from Birmingham.

## BOTSFORD GENERAL HOSPITAL

Farmington Hills, MI

**FOR MORE INFO, CONTACT:**

*Botsford General Hospital  
Medical Education Department  
28050 Grand River  
Farmington Hills, MI 48336  
248-471-8224  
www.botsfordsystem.org/meded*



**botsford  
general  
hospital**

Botsford General Hospital, known nationally as a leading teaching hospital, offers extensive continuing education programs in a wide range of specialties and subspecialties.

- Cardiology
- Dermatology
- Diagnostic Radiology
- Emergency Medicine
- Family Medicine
- Family Medicine/OMM
- Gastroenterology
- General Surgery
- Infectious Diseases
- Internal Medicine
- Nephrology
- Neurology
- Obstetrics/Gynecology
- Orthopedic Surgery
- Osteopathic Manipulative Medicine
- Otolaryngology/Orofacial Plastic Surgery
- Podiatry
- Urologic Surgery
- Vascular Surgery

Our affiliation with Michigan State University College of Osteopathic Medicine allows our physicians additional access to the latest research in diagnostic and therapeutic technology. While we continue our commitment to progress by expanding our facilities and training our staff in the most current techniques and procedures, we recognize that health care is not limited to technology.

Our most fundamental activity is the provision of personal, compassionate care that considers the entire person. At Botsford, we believe that making a difference starts in our community. If you would like additional information, call (248) 471-8224 or inquire via email through our website at [www.botsfordsystem.org/meded](http://www.botsfordsystem.org/meded).

## FREEMAN HEALTH SYSTEM

Joplin, MO

**FOR MORE INFO, CONTACT:**

*Mikell Warren, RN, MHA  
Admin Director, Med Education  
1102 West 32nd Street  
Joplin, MO 64804-3599  
mdwarren@freemanhealth.com  
freemanhealth.com*

Freeman Health System in Joplin, Missouri, is a 353-bed, three-hospital system providing comprehensive healthcare and behavioral health services to more than 450,000 area residents from Missouri, Arkansas, Oklahoma, and Kansas.

As a 100 Top Hospital in the Teaching Hospital category and a 100 Top Heart Hospital, Freeman provides interns and residents ample opportunity to study with the best and develop clinical skills through direct patient care. Residents are exposed to a wide range of clinical experiences in both inpatient and ambulatory settings.

Freeman's residency programs consist of Emergency Medicine, Otolaryngology /Facial Plastic Surgery, and Internal Medicine. Competitive salaries and excellent benefit packages are available, including health, dental, and professional fee payment for professional college memberships, Missouri Association of Osteopathic Physicians & Surgeons, board exams, and training licensure.

As part of a teaching network that is affiliated with the Oklahoma State University OPTI, Freeman is committed to research and providing contemporary, innovative, quality healthcare solutions to the region we serve.

We invite you to become one of Freeman's best. For more information, please visit our website or contact Mikell Warren, Administrative Director of Medical Education, 417.FHS.6612.

## GENESYS REGIONAL MEDICAL CENTER

Grand Blanc, MI

**FOR MORE INFO, CONTACT:**

*Kathy Johnson, Coordinator  
Undergraduate Medical Education  
Genesys Regional Medical Center  
810-606-7124*

Genesys Regional Medical Center is a state-of-the-art 410 bed facility conveniently located off I-75 in a suburban setting in Grand Blanc, Michigan, between Detroit and Flint. You will experience lots of hands-on opportunities with dedicated faculty to support your individual learning program. Genesys offers the latest technology and equipment serving a diverse patient population with extensive pathology.

**EXPLORE THESE GME OPPORTUNITIES:**

- Traditional Internship
- Track Internship/Residencies:
  - ENT
  - FP (AOA & ACGME accredited)
  - IM
  - Ob/Gyn
- Linked Internship/Residencies:
  - EM
  - General Surgery
  - Orthopedic Surgery
- Additional Residencies:
  - Dermatology
  - Ophthalmology
  - Podiatry
- Fellowships:
  - GI
  - Pulm/Critical Care
  - Sports Med

**OUR VOLUMES SUPPORT OUR TRAINING PROGRAMS:**

- ER visits 101,510
- OB deliveries 2,927
- Surgeries 23,211
- Admissions 25,932
- Teaching faculty 240

Learn more about our style of medical education by visiting our website:

[www.genesys.org](http://www.genesys.org)

If you have additional questions, please call (800) 233-2863.

Wyandotte, Michigan

# HENRY FORD WYANDOTTE HOSPITAL

[www.wyandottehospital.com](http://www.wyandottehospital.com)

Henry Ford Wyandotte Hospital is located in a family friendly river-front community and is 45 minutes from Detroit and Ann Arbor. The 340 bed Hospital is an osteopathic training institution offering a comprehensive range of clinical opportunities. Our major tertiary training partner, Henry Ford Hospital, is located 30 minutes away in Detroit.

Henry Ford Wyandotte Hospital Medical Education, affiliated with Michigan State University College of Osteopathic Medicine, includes a strong didactic program of daily morning report, lectures, nationally known speakers, conferences, journal clubs, tumor conferences, and board review courses. Henry Ford Wyandotte Hospital has many advantages that support physician training including electronic medical records and PACS, a system that provides access to your patient's images and reports from any pc

connected location. The Hospital also offers an advanced communication system, extensive medical library and free parking.

Henry Ford Wyandotte Hospital recently expanded its outreach by opening a state of the art 80,000 sq ft ambulatory care center in nearby Brownstown Township. The Center for Health Services offers a full 24-hour emergency care service, diagnostic imaging, an on-site laboratory, sleep center and professional offices that will expand training opportunities for students, interns and residents.

## Medical Student Rotations and Housing

Henry Ford Wyandotte Hospital offers a comprehensive range of rotations for medical students. Most rotations are one-on-one with student and preceptor providing a stimulating training experience designed to enhance your medical education. Henry Ford Wyandotte Hospital welcomes medical students from any AOA accredited medical school.

Complimentary housing is available and meals provided while on duty. Medical students participate in the full didactic program offered by Henry Ford Wyandotte Hospital.

### Facts at a Glance:

- 600 Primary and Specialty Care Physicians
- 18,000 Inpatient Admissions
- 1,600 Births
- 75,000 Emergency Visits
- 20,000 Surgeries

## Internships

- **Traditional\***  
*\*Rotating internship may be combined with ACGME transitional year program at Henry Ford Hospital*
- **Family Practice Emphasis**  
*(Dually accredited AOA and ACGME program with Henry Ford Hospital)*
- **Emergency Medicine Emphasis**
- **General Surgery Emphasis**
- **Ob/Gyn Track**
- **Internal Medicine Track**

For more details on Medical Education at Henry Ford Wyandotte Hospital visit our website at:

[www.wyandottehospital.com](http://www.wyandottehospital.com)

## Residency Programs

- **Emergency Medicine**
- **General Surgery**
- **Internal Medicine**
- **Obstetrics and Gynecology**
- **Podiatric (PM&S 36)**
- **Family Practice**  
*(Dually accredited AOA and ACGME program with Henry Ford Hospital)*

Or contact:

Dennis R. Lemanski, D.O., FAODME  
Senior Vice President and  
Director of Medical Education  
(734) 324-3781  
[www.eflando1.hfhs.org](http://www.eflando1.hfhs.org)





## GRAND RAPIDS MEDICAL EDUCATION & RESEARCH CENTER

Grand Rapids, MI

**FOR MORE INFO, CONTACT:**

Grand Rapids Medical Education &  
Research Center  
616-732-6200  
www.grmerc.net



Grand Rapids  
**MEDICAL EDUCATION &  
RESEARCH CENTER**  
for Health Professions

The Grand Rapids, Michigan area is home to a progressive, high-quality medical and health professions community with a strong track record of delivering comprehensive care to the region. More than 1000 clinical faculty participate in the education of our students and residents, offering trainees a diverse, highly talented and committed group of health professionals from which to learn.

We offer residency programs in Diagnostic Radiology, Emergency Medicine, Family Medicine, General Surgery, Internal Medicine, Internal Medicine/Pediatrics, Obstetrics & Gynecology, Orthopaedic Surgery, Pediatrics, Plastic Surgery, and Transitional Year.

Fellowships are available in Colon & Rectal Surgery, Pediatric Hematology & Oncology, Surgical Critical Care, and Vascular Surgery.

Our Visiting Medical Student program offers elective clerkships in more than 50 specialty and subspecialty areas.

As the second largest city in Michigan, Grand Rapids is not only the commercial, recreational and cultural center of Western Michigan; it is also one of the Midwest's most important, and beautiful hubs. With a metropolitan population of over 650,000, this community is the perfect size to be able to foster a unique blend of big city excitement with small town participation. It's no wonder that Grand Rapids was named one of America's Top Ten Most Livable Mid-Sized Cities.

Please visit our web-site for more information about the educational opportunities available for you in Grand Rapids. We look forward to hearing from you!

## GREENVILLE HOSPITAL SYSTEM

Greenville, SC

**FOR MORE INFO, CONTACT:**

Jerry R. Youkey, M.D.,  
Vice President, Medical Services &  
Dean of Academic Services  
864-455-7880  
www.ghs.org



GREENVILLE HOSPITAL SYSTEM  
UNIVERSITY MEDICAL CENTER

### The Hybrid *Community-University* Model

Greenville Hospital System has grown over its 90 years from a single community hospital to a comprehensive, integrated delivery system comprised of three acute care hospitals and 12 specialty healthcare facilities focused on high-volume, high-quality patient care enhanced by education and research. Because of its history, GHS is the ideal "community-university" model of resident education to give you hands-on patient experience augmented by the advantages of our role as an academic medical center.

- High patient volumes
- Real-world experience from the first day
- State-of-the-art facilities
- Extensive research opportunities
- Supportive faculty-resident interaction
- Great quality of life outside the hospital

Residency and fellowship programs in Developmental-Behavioral Pediatrics, Family Medicine, Family Medicine Sports Medicine, General Surgery, Internal Medicine, Medicine-Pediatrics, Obstetrics & Gynecology, Orthopaedics, Pediatrics, and Vascular Surgery.

See what it's *really* like at Greenville Hospital System at [meettheresidents.com](http://meettheresidents.com).



## MSUCOM/SCS

East Lansing, MI

**FOR MORE INFO, CONTACT:**

(800) 685-5756 or (517) 432-2852  
www.com.msu.edu/scs

The Statewide Campus System (SCS) of Michigan State University College of Osteopathic Medicine, a consortium of 26 Michigan hospitals, offers extensive educational support and programming to member institutions. Within this consortium are nearly 2,000 internship and residency positions, 198 postdoctoral programs, and approximately 1,900 university-appointed faculty. Member hospitals are spread throughout the suburban, and urban training sites. The extensive variety of 26 medical specialties runs the gamut from anesthesiology through urology.

The SCS plays an important role in providing educational programs for the various residency programs that include procedure courses, didactic lectures and workshops, board review courses, programs to comply with core competencies, and a variety of other educational and support services. The newly opened MSU Learning and Assessment Center (www.lac.msu.edu/index.htm) will play an increasingly prominent role in assessing resident's clinical and professional skills.

The SCS website at www.com.msu.edu/scs contains comprehensive information about all of the member hospitals and their postdoctoral programs. If you have any questions about postdoctoral education, the Dr. SCS feature on our website provides you with straightforward answers to all your queries. We look forward to hearing from you.

## MILLCREEK COMMUNITY HOSPITAL

Erie, PA

**FOR MORE INFO, CONTACT:**

Millcreek Community Hospital  
Medical Education Department  
5515 Peach Street  
Erie, PA 16509  
814-868-8217  
www.millcreekcommunityhospital.org



Millcreek Community Hospital is proud of its long history of training Osteopathic Students, Interns, and Residents.

Visit our website or contact the Medical Education Department to learn more about our GME opportunities

**INTERNSHIPS**

- Traditional Rotating Internship
- Special Emphasis Internships in
  - Family Medicine and Orthopedic Surgery
- Specialty Track Internships in
  - Internal Medicine and ENT

**RESIDENCIES**

- Internal Medicine
- Family Practice
- Ophthalmology
- General Psychiatry
- Orthopedic Surgery
- ENT
- Pharmacology
- Podiatry

**FELLOWSHIPS**

- Gastroenterology
- NMM/OMM

Earn your M.S. in Medical Education-Tuition Free  
Become a LECOM Junior Faculty Member

# NORTH SHORE-LONG ISLAND JEWISH HEALTH SYSTEM

New York City and Long Island, New York

## FACTS AT A GLANCE

- North Shore-LIJ Health System has 3 tertiary hospitals; 8 community hospitals; two specialty care hospitals; many ancillary facilities
- Third largest secular, non-for-profit health system in the United States
- Services a combined population of over 5.2 million in urban and suburban areas
- The health system is affiliated with Albert Einstein College of Medicine and New York University School of Medicine. We have over 1,200 residents and fellows and 90 graduate medical education-training programs

## RESIDENCY PROGRAMS OFFERED

- Cardiothoracic Surgery
- Diagnostic Radiology
- Emergency Medicine
- Family Practice
- General Surgery
- Internal Medicine
- Neurology
- Neurosurgery
- Obstetrics & Gynecology
- Ophthalmology
- Orthopaedic Surgery
- Pathology
- Pediatrics
- Physical Medicine & Rehabilitation
- Psychiatry
- Urology
- Dental, General
- Oral/Maxillofacial Surgery
- Oral Pathology
- Pediatric Dental Medicine
- Podiatry



**LAWRENCE SMITH, M.D.,**  
Chief Academic Officer and  
Sr. V.P. of Academic Affairs

**The North Shore-Long Island Jewish Health System** is the premier health network of Long Island, Queens and Staten Island. Aligned as one organization, there are 15 hospitals in the health system making it the third largest secular, not-for-profit health system in the United States. Nine of our hospitals are teaching facilities that are involved in both graduate and under-graduate medical education, including North Shore University Hospital, Long Island Jewish Medical Center, Schneider Children's Hospital, Zucker-Hillside Hospital, Glen Cove Hospital, Forest Hills Hospital, Plainview Hospital, Southside Hospital and Staten Island University Hospital. These outstanding institutions are dedicated to quality medical education, especially at the graduate level, coupled with compassionate and sophisticated patient care.

The health system maintains relationships with multiple medical schools including formal affiliations with Albert Einstein College of Medicine and New York University School of Medicine. We also have formal agreements for student clinical rotations with SUNY Downstate School of Medicine, SUNY Health Science Center at Stony Brook and New York College of Osteopathic Medicine.

Through our teaching institutions, the health system is one of the largest clinical medical educational institutions in the country responsible for over 1,200 residents and fellows and 90 graduate medical education-training programs. In addition, the health system supports hundreds of students from our affiliated medical schools on required clerkships, elective clinical rotations and mentored experiences in basic and clinical research.

The Feinstein Institute for Medical Research conducts basic and clinical research within the health system. It is in the top sixth percentile of all institutions that receive NIH funding. Its research programs are world-renowned especially in the areas of autoimmune diseases, neurodegenerative diseases, sepsis and psychiatric diseases. The annual operating budget of the institute is approximately \$50,000,000 and includes an NIH-designated GCRC. The

## FOR MORE INFO, CONTACT:

North Shore-Long Island Jewish Health System  
Office of Academic Affairs  
125 Community Drive  
Great Neck, NY 11021  
516-465-3192 516-465-3190 fax  
www.northshorelij.com

institute can award PhD degrees in molecular medicine to candidates who already hold a medical degree and choose to pursue a career in clinical transitional research.

The health system is also committed to the broad education of a wide array of health care professionals other than physicians, including dentists, podiatrists, physician assistants, nurses and medical administrators. To continually upgrade the skills of all employees, the health system maintains a Center for Learning and Innovation, and it has a joint Masters Degree program in Health Care Management with Hofstra University.

Medicine is a team effort and an important aspect of graduate training at the health system. The strong mix of residents who come from across the United States, with a variety of experiences and cultural backgrounds, add to the strength of the educational environment. Training takes place in a positive work environment, with outstanding faculty who are national and international leaders in their field. The educational environment is supported by the Office of Academic Affairs, ensuring that there is a well-trained, enthusiastic faculty and appropriate institutional support. This enables residents to find their day-to-day challenges and responsibilities exciting and focused on learning.



North Shore-Long Island Jewish Health System

# ST. JOSEPH HEALTH CENTER

Warren, OH

**FOR MORE INFO, CONTACT:**

St. Joseph Health Center  
 Mary Grace Aurandt,  
 Manager, Medical Education  
 667 Eastland Ave SE  
 Warren, OH 44484  
 330-841-4772 330-841-4021 fax  
 marygrace\_aurandt@hmis.org

**WHO WE ARE**

St. Joseph Health Center is a non-profit acute care facility located in Warren, Ohio. St. Joseph is a member of Humility of Mary Health Partners, a region of Catholic Healthcare Partners-the largest health system in Ohio and the seventh largest not-for-profit health system in the United States. St. Joseph offers a complete scope of health care services and was the first Level III trauma center in Trumbull County.

St. Joseph, in collaboration with Ohio University College of Osteopathic medicine Centers for Osteopathic Research and Education (OUCOM-CORE), is dedicated to providing post-doctoral trainees within our programs with a well-rounded education experience.

*Benefits:* competitive salary for interns and residents, flexible benefits plan, paid vacation, malpractice insurance, paid AOA membership/OOA membership, \$1,000 moving allowance, educational stipend, lab coats, paid meals, BLS, ACLS, PALS, housing for short-term pre-doctoral rotations, outside rotation expense allowance for select residencies

**MEDICAL STUDENT**

*Clinical Rotations:* anesthesiology, cardiology, critical care, emergency medicine, ENT, family medicine, general internal medicine, general surgery, neurology, OMT, ophthalmology, orthopedic surgery, otolaryngologic surgery, pediatrics, podiatry, pulmonary medicine, wound care

*Internships:* traditional rotating internship, special emphasis in family medicine, internal medicine specialty track internship

*Residencies:* emergency medicine, family medicine, internal medicine, orthopedic surgery



MICHIGAN STATE UNIVERSITY · KALAMAZOO CENTER FOR MEDICAL STUDIES

**OUR MISSION**

Michigan State University Kalamazoo Center for Medical Studies is a university and community partnership driven by a team of dedicated professionals committed to provide excellence in graduate, undergraduate and continuing medical education, knowledgeable and caring service, and research.

**OUR VISION**

Michigan State University Kalamazoo Center for Medical Studies will excel in providing quality medical education. We will deliver expert, responsive patient care and pursue innovative research.

**OUR VALUES**

- Compassionate Service
- Leadership
- Lifelong Learning
- Teamwork
- Commitment to Excellence

**At MSU/KCMS**, we realize that being an exceptional physician means having a balance between the personal and professional areas of your life. Our mission is to help you achieve your clinical and academic goals in a truly supportive environment. More than 150 residents take part in our residency programs and have exposure to the broadest range of health care. Our partnership with award-winning Level One Trauma Centers means that from newborns to the elderly, you will have patient diversity that will allow for you to develop your skills to their fullest.

**At MSU/KCMS**, you will have opportunities to participate in a variety of research projects. We are proud of our numerous awards and grants and our faculty that understands the correlation between great research and great patient care.

**At MSU/KCMS**, with quality of education comes quality of life. Almost half our residents own their own homes in a region that has been ranked as one of the best places in America to live... good schools, low cost of living, clean air and an abundance of recreation means your hours outside of MSU/KCMS will be as fulfilling as those inside.

**Come see what we have to offer.**  
 Visit us at [www.kcms.msu.edu](http://www.kcms.msu.edu) or call (800) ASK-KCMS.

MSU/KCMS offers fully accredited programs in Internal Medicine · Pediatrics · General Surgery · Family Medicine · Psychiatry · Orthopaedic Surgery · Medicine/ Pediatrics · Emergency Medicine · Sports Medicine Fellowship · Transitional Year

MSU/KCMS also offers AOA internships and has two dually accredited (AOA/ACGME) residencies in Family Medicine and Internal Medicine.



# SUMMA HEALTH SYSTEM

Akron, OH

## FACTS AT A GLANCE

- Summa Health System is one of the largest organized delivery systems in Ohio
- Summa is a major teaching and research clinical site for Northeastern Ohio Universities College of Medicine (NEOUCOM).
- Summa's commitment to state-of-the-art technology includes using systems like Computerized Physician Order Entry (CPOE), Picture Archiving Communications System (PACS) and Electronic Medical Records (EMR).
- Summa's Minimally Invasive Surgery Institute offers the da Vinci Robotic Surgical System and two interactive telemedicine centers.
- The residency staff includes more than 200 residents in 13 specialties.

## RESIDENCY PROGRAMS

- Emergency Medicine
- Family Medicine (allopathic and osteopathic accredited)
- General Surgery
- Internal Medicine (Educational Innovations Project participant)
- Obstetrics/Gynecology
- Ophthalmology
- Orthopaedic Surgery
- Pathology
- Plastic Surgery
- Preliminary Medicine
- Psychiatry
- Transitional
- Urology



**JOSEPH ZARONI, M.D., F.A.C.P**

*Vice President,  
Medical Education & Research*

Summa Health System is one of the largest organized delivery systems in Ohio, encompassing a network of hospitals, community-based health centers, a health plan, a physician-hospital organization, an entrepreneurial entity, research and medical education and a foundation. Summa is nationally renowned for excellence in patient care and for exceptional approaches to healthcare delivery.

The System represents more than 1,200 licensed inpatient beds on the Summa Health System (allopathic) and Cuyahoga Falls General Hospital (osteopathic) campuses. The educational environment at Summa combines the positive aspects of a high quality community hospital system with the academic strengths of a major teaching and research hospital system.

Major third party sources have recognized Summa for its exceptional clinical care. For nine consecutive years, U.S. News and World Report ranked Summa as one of America's Best Hospitals. Solucient, the nation's leading source of health care business intelligence recognized Summa as one of the Top 100 Hospitals in the country and one of the Top 15 Major Teaching Hospitals. In Solucient's research of the 100 Top Hospitals, Summa was found to treat sicker patients, have higher survival rates, have lower complication rates and have lower costs than peer hospitals. In fact, Summa's mortality rate was the lowest among the 15 major teaching hospitals on that list.

Summa residents also receive valuable research opportunities. Currently Summa has five on-going NIH and NIMH federally funded grants with a total of more than \$3 million dollars in funds. There are 385 active protocols currently ongoing at Summa.

Medical education research initiatives include the selection of Summa's Internal Medicine Residency Program as one of only 17 programs in the nation to participate in the Educational Innovations Project (EIP), developed by the ACGME. Participation in this nationally recognized EIP initiative provides 10 year accreditation for the Internal Medicine Program, the longest

## FOR MORE INFO, CONTACT:

Summa Health System  
Office of Medical Education and Research  
Akron, OH 44309  
800-322-0517  
[www.summahealth.org](http://www.summahealth.org)

accreditation cycle granted by the ACGME.

In addition, The Institute for Professionalism Inquiry is an initiative directed by the Office of Medical Education. The Institute conducts multidisciplinary qualitative and quantitative research on various dimensions of professionalism and humanism; creates and nurtures a community of scholars including physicians, nurses, other health care professionals, humanities scholars, and social/behavioral scientists; and creates and disseminates materials and programs that enhance professional and humanistic practices in the health professions.

Summa's graduates have consistently demonstrated superior board passage rates and have successfully entered practices in many communities across the country. In addition, those graduates inclined toward further specialized training have been extremely competitive and successful in attaining fellowship training positions in prestigious institutions nationwide. Our graduates are the greatest evidence of the success of the residency programs at Summa. Visit Summa at <http://meded.summahealth.org>.



## UNIVERSITY OF NEW ENGLAND

Biddeford, ME

### FOR MORE INFO, CONTACT:

University of New England  
11 Hills Beach Road  
Biddeford, ME 04005  
207-602-2840  
[www.une.edu/com/residency](http://www.une.edu/com/residency)

The University of New England College of Osteopathic Medicine (UNECOM) residency programs have emerged as among the premier programs in the country. Our medical school has consistently been ranked by *U.S. News & World Report* as one of the top 50 medical schools in the country for the training of primary care physicians.

The residency at UNE has grown since its inception in 1989. We offer a Family Practice Residency Program with the option of special emphasis in OMM, a Neuromusculoskeletal Medicine Residency Program and a Transitional Internship Program. The University expects to have 27 AOA approved positions (18 FP and FP/OMM track, 6 NMM and 3 Transitional Internship positions), and continues to strengthen the quality and the number of affiliate hospitals. We also anticipate an NMM +1 Residency Program in July 2007 with six positions.

Mercy Hospital in Portland, Maine has been an affiliate for several years. The addition of Southern Maine Medical Center in Biddeford, Maine to our training program has allowed us to dramatically increase the number of allopathic and osteopathic sub-specialty preceptors.

The UNE curriculum is based on the framework established and approved by the AOA, AAO, and the ACOFP. The resident is given the flexibility to pursue areas of interest within the guidelines set forth by the osteopathic accrediting agencies and the UNECOM Graduate Medical Education Committee.

## LEHIGH VALLEY HEALTH NETWORK (LVHN)

Bethlehem, PA

### FOR MORE INFO, CONTACT:

Lehigh Valley Hospital - Muhlenberg  
Dawn Yenser, Program Coordinator  
5th floor Residency Suite  
2545 Schoenersville Road  
Bethlehem, PA 18017  
484-884-2888 484-884-2885 fax  
[www.lvhemres.com](http://www.lvhemres.com)

The Lehigh Valley Health Network (LVHN) offers superb emergency medicine residency training. Department of Emergency Medicine is focused on providing diverse educational experience for our osteopathic emergency medicine residents leading to board certification. Each resident will have ample opportunity to develop clinical skills through formal education and direct patient care with an emergency medicine team that cares for over 112,000 patients each year.

The hospital network has over 800 beds in operation and the educational experience is broadened by an aeromedical transport system that conducts 3,000 flights annually for the region's Level I trauma center with additional pediatric privileges. Unique experience is also available at the George E. Moerkirk Emergency Medicine Institute that trains over 10,000 students annually and uses sophisticated teaching tools that include a human patient simulator.

As part of a teaching network that is affiliated with the Penn State University College of Medicine and Philadelphia College of Osteopathic Medicine, Lehigh Valley Hospital - Muhlenberg campus has a well organized clinical faculty that is committed to research and providing a diverse, enriching experience that residents need for a successful professional career in Emergency Medicine.

For more information, please visit our website at [www.lvhemres.com](http://www.lvhemres.com) or contact Dawn Yenser, Program Coordinator, at 484-884-2888.

## MAIMONIDES MEDICAL CENTER

Brooklyn, NY

### FOR MORE INFO, CONTACT:

Maimonides Medical Center  
Peggy Hainke, Program Coordinator  
4802 Tenth Avenue  
Brooklyn, NY 11219  
718-283-6029  
[phainke@maimonidesmed.org](mailto:phainke@maimonidesmed.org)  
[www.mmc-em.org](http://www.mmc-em.org)

The Maimonides Medical Center Emergency Department provides superb training in a high volume, high acuity hospital in Brooklyn, New York. Maimonides is a community-based academic ED seeing nearly 90,000 patients per year and serving the most culturally diverse zip codes in America. We are well known in the New York area for our cardiac, neurological and critical care, offering residents many opportunities for procedures and resuscitation. We also offer a superb pediatric experience at the Infant and Children's Hospital of Brooklyn at Maimonides, which is the only certified children's hospital in Brooklyn.

Maimonides has a 60-year tradition of resident education and currently trains over 400 residents and fellows including many medical, surgical and pediatric subspecialties. In addition to the excellent teaching at Maimonides, our residents spend two blocks on the trauma service at Shock Trauma, in Baltimore, MD, one pediatric trauma block at Kings County Hospital in Brooklyn and one block at the NYC Poison Control Center.

Our graduates are confident, competent Emergency Physicians with excellent procedural skills who are able to stabilize, diagnose and treat any patient who presents to the ED. We invite you to train at one of the best Emergency Medicine training programs available.

## THE GERONTOLOGICAL SOCIETY OF AMERICA

Washington, DC

**FOR MORE INFO, CONTACT:**

GSA  
1030 15th Street, NW  
Suite 250  
Washington, DC 20005  
202-842-1275  
geron@geron.org  
www.geron.org



### GERIATRIC MEDICINE; IT'S THE FUTURE!

It's hard to predict the future, but one thing is certain, thanks to medical and public health advances, people are living longer and the number of older people is growing. By 2030, one out of every five Americans will be 65 or older.

Join The Gerontological Society of America and learn more about the many opportunities afforded by a career in geriatric medicine. As a member, you have access to the Society's five premier, refereed journals, including the Journal of Gerontology: Medical Sciences. You'll also receive cutting-edge research, education and professional resources, opportunities to network and learn from the experts, and savings on GSA meetings and products. This year's Annual Scientific Meeting will attract more than 3,500 of the nation's top researchers in aging, and will be held in San Francisco, November 16-20, 2007. The conference offers more than 500 sessions, a quarter of which are under the topic of clinical medicine. Physicians can typically receive up to 30 CMEs.

## KINGMAN REGIONAL MEDICAL CENTER

Kingman, AZ

**FOR MORE INFO, CONTACT:**

Kingman Regional Medical Center  
JoAnne Price  
928-757-0649  
graduatemedicaleducation@azkrmc.com



**Serving Our Community with  
Compassion and Commitment**

Kingman Regional Medical Center is a non-profit, community-owned facility with 213 licensed beds. It includes a range of advanced health and wellness services, including:

- Del E. Webb Wellness and Rehabilitation Center
- Primary care physician practice
- Advanced medical programs in cardiology, cancer and rehabilitation, home health and hospice care
- New open heart program scheduled to begin operation in the Spring of 2007
- New \$4.8 million imaging facility, with approximately 13,000 square feet, provides state-of-the-art technology including Digital X-ray, CT, MRI (3T) and Mobile PET/CT with a wing dedicated to women's needs that includes Digital Mammography, Bone Densitometry and Ultrasound.

The KRMC Graduate Medical Education (GME) program was established in 2001 and quickly grew to become a leader in the training and education of family practice, dermatology and emergency room residents. It offers osteopathic intern and resident physicians the opportunity to specialize in these fields. They experience the aspects unique to healthcare in a rural setting, but in a facility with resources and attributes that rival those in urban areas. KRMC offers sign-on bonuses, competitive salaries as well as interviewing and moving expenses for family practice residents. Residents receive free membership to our full-service fitness center which features an indoor pool, Jacuzzi, racquetball and basketball courts as well as cardiovascular and strength training equipment and personal trainers. Dedicated classrooms, free meals, residency offices and education stipends are just a few of the other bonuses that make KRMC the ideal hospital for you to pursue your residency.

At the Family Practice Residency Clinic, our residents treat patients under the supervision of Board Certified Family Practitioners. Additionally, many physician specialists in Kingman and the surrounding areas are dedicated to participation in the training of our residents as they rotate through various medical specialties each month.

Kingman offers an abundance of mountain views, moderate temperatures and outdoor enjoyment year round. It provides easy access to mountains, water recreation and big-city shopping while maintaining the small town feel with friendly people. Join us in Kingman - a cozy, but growing, community in the high desert of northwestern Arizona.



# SAINT JOSEPH REGIONAL MEDICAL CENTER

South Bend, IN

## FACTS AT A GLANCE

- The people - residents who are serious about their post-graduate education, great faculty, receptive specialists who like to teach, and the support staff who keep us all on track
- The opportunities to learn procedures
- The humane call schedule and the "real" time off
- The money and the benefits
- Location, location, location

## ROTATION SCHEDULE

**FIRST YEAR:** One half day per week in the Family Medicine Center is required

- 1 month FMC1 + (Radiology)
- 1 month FMC2 + (Rehab)
- 3 months of Medicine
- 2 months of Pediatrics
- 2 months of OB
- 1 month of ER
- 1 month of Surgery
- 1 month Elective
- (Osteopathic Program requires 2 mos of Med and 1 mo of ICU)

**SECOND YEAR:** Two half days per week in the Family Medicine Center are required

- 1 month FMC3+ (Business Office)
- 1 month FMC4+ (Community Medicine)
- 3 months of Medicine
- 2 months of Pediatrics
- 2 months of OB
- 1 month of ER
- 1 month Elective
- 1 month Surgery
- (Osteopathic Program requires 1 month FMC4 + Comm Med & Outpt Peds/No ER instead 2 months Elective)

**THIRD YEAR:** Three half days per week in the Family Medicine Center are required

- 1 month Medicine Chief
- 1 month Gynecology
- 1 month Cardiology
- 4 months Electives
- ½ month ENT
- ½ month Ophthalmology
- ½ month Urology
- ½ month Dermatology
- 2 months Orthopedics (includes Sports Medicine)
- (Osteopathic Program requires 2 mo of ER/ 1 mo of Surgery of Choice/1 mo of Ortho/1 mo OB/GYN)

**REQUIRED LONGITUDINAL EXPERIENCES:** ICU/Geriatrics/ Psychiatry/Family Medicine Project and Practice Management.



**MARTIN WIESCHHAUS, M.D., F.A.A.F.P.,**  
Program Director

The Family Medicine Residency at Saint Joseph's is unopposed and dually accredited by the allopathic accreditation body- (ACGME) and osteopathic accreditation body- (AOA). Our Program Director for our osteopathic program is Michelle Cervin, D.O. DAMBA. We provide family-centered care, taking into account the spiritual, psychological, sociological and physical need of our patients. The goals of the residency are:

- To provide a quality program of training and education with a balance between patient service and the active pursuit of knowledge
- To impart to residents the knowledge and skills necessary to demonstrate competency in both clinical and procedural skills
- To train in family-centered care that addresses the longitudinal health care needs of the residents' patients, focusing on comprehensive preventive health care
- To provide our residents with an environment that fosters a commitment to providing care to the medically underserved
- To foster behaviors consistent with the high level of professionalism expected of a family physician and to help residents balance their personal and professional lives
- To provide a forum for residents to demonstrate their clinical acumen and scholarly pursuits through teaching and supervising their colleagues
- To develop in residents an attitude that fosters their maintenance of high quality medical skills after residency

Our graduates who sit for Boards following their residency at Saint Joseph Regional Medical Center have consistently passed.

We provide a high degree of hands-on clinical experience including obstetrics with a high-risk clinic. Workshops and training in procedure skills included:

- ALSO
- ACLS
- Casting
- Colposcopy
- Dermatology
- EKG-Stress Testing
- PALS
- Nasaloryngoscopy
- NRP/NALS
- Ophthalmology
- Practice Management
- Virtual Flex Sig and Colonoscope in Family Medicine Center

## FOR MORE INFO, CONTACT:

Saint Joseph Regional Medical Center,  
Family Medicine Residency  
Martin Wieschhaus, MD, FAAFP  
PO Box 1935  
South Bend, IN 46634  
574-237-7637 574-472-6088 fax  
moenm@sjrmc.com  
www.saintjosephresidency.com

Excellent salary and benefits, including a housing stipend. Call is every third to fifth night while on inpatient rotations (first and second year); every ninth night at-home call (third year). There are opportunities to moonlight during residency in the second and third years.

The Family Medicine Center, where residents see their clinic patients, has moved to an Electronic Medical Records system. Residents receive a state-of-the-art Palm Pilot when they begin employment that is theirs to keep following residency. Each of the faculty teaches OB, in addition to the experience residents obtain by working closely with dedicated OB physicians on their high-risk OB patients. There is a dedicated full-time Pharmacist who assists in the education of residents and patients in the clinic. The Family Medicine Center sees 20,000+ patient visits annually. Of those, 5,000+ pediatric clinic visits annually. It has a diverse clinic population and also includes an optional International Health Track component with Third World rotations during all three years of residency. Also available are elective options in the Sports Medicine Program as well as elective Alternative Medicine rotations that residents have arranged.

Saint Joseph Regional Medical Center is a member of Trinity Health, the third largest Catholic health system in the US. It is also the largest provider of charity health care in South Bend, as well as being the first hospital established in South Bend (1882).

Located 80 miles east of Chicago, South Bend is home to the University of Notre Dame and is in close proximity to Lake Michigan.



**SAINT JOSEPH**  
Family Medicine  
Residency Program



**SAINT JOSEPH**  
Osteopathic Family  
Medicine Residency

# SPARTANBURG FAMILY MEDICINE RESIDENCY PROGRAM

Spartanburg, SC

## FACTS AT A GLANCE

- *Extremely strong quality core rotations in Pediatrics, OB, Internal Medicine and Family Medicine, Outpatient and Inpatient*
- *One of the few Family Medicine OB Fellowships in the Southeastern United States*
- *A rural extension of the program is 13 miles away in Chesnee South Carolina*
- *Ninety-nine plus percent board pass rate*
- *A friendly community near the mountains and 3-4 hours away from the beach.*



**OTIS L. BAUGHMAN III, M.D.,**  
Director

Years ago I sat where you do today. I wondered about where I would train, what my teachers and fellow residents would be like, will the program be supportive, and where I would live, rest, and relax. I found a wonderful program. Now this task is yours. I hope what I share with you will help in your search for your one-best-place.

I finished Spartanburg in 1980. Years of private practice and teaching led me back to Spartanburg in 1990 as the program director. Imagine what that was like. I returned to where I was trained, knowing personally which areas needed strengthening or a complete overhaul and who were the good (and bad) teachers. With the help of the many people that support medical education here, ALL the poor teachers are gone, the old problems fixed, and a constantly renewing system of excellence in education AND patient care is in place. THIS is the program I wished I had finished!!

Our hospital is a region-leading community based tertiary care. The Family Medicine Program is unopposed with two other programs. There are twelve residents per year in family medicine and we are literally king of the hill. There is a small General Surgery Residency, which helps greatly with procedural and surgical training, and a six resident Transitional Program, which assures more comfortable call schedules in the first year. Spartanburg is an enhanced program, not an opposed one!

Right now is the peak of our 35 year history. In what other community-based program will you find 27 full-time paid faculty? There are two obstetricians, five internists, four pediatricians, nine family doctors, one PhD behavioral scientist, one PharmD, one part-time addictionologist, a part-time child psychologist, and five surgical faculty. Many are teacher-of-the-

## FOR MORE INFO, CONTACT:

Otis L. Baughman III, MD, Director  
853 N. Church St. Ste. 510  
Spartanburg, SC 29303  
864 560-1558 864 560-1565 fax  
obaughman@srhs.com  
www.spartfam.org

year award winners. This experienced and dedicated faculty gives you the depth of academic training of a university setting AND you get the superb clinical exposure you expect from a solid community program. Spartanburg is "The Community-based Program With University Strengths". With this fulltime faculty support, you can see why.

The core of the program is, of course, our residents. We have been fortunate enough to attract outstanding students from across the United States. We have matched full 10 of my 15 years here. The in-house board scores are the highest in history. Our resident culture is one of mutual support for the success of all. Residents have done much to direct the necessary changes over the years and have a big voice in planning and improvements.

Equally important is where you will live. This growing small city has exploded with growth over the last ten years. Spartanburg is friendly, clean, blessed with the best school districts in the State, and centered in a geographically diverse area. The mountains are 35 minutes away. The beaches are a 3-4 hour drive. Charlotte and Asheville, NC are an hour's drive and it is 2 ½ hours to Atlanta. Hiking, bike riding, plays, festivals, family events – you name it and Spartanburg has it.

I welcome you to look at one of the true pearls in Family Medicine education. Our goal is excellence in all aspects of your education and a warm, friendly, supportive three years for you and your significant others. This is the driving philosophy for the constant push for quality in resident education and patient care that is central in the philosophy of the Spartanburg Family Medicine Residency Program. Come see one of the best programs around. Perhaps it will become yours!

# ST. JOHN WEST SHORE HOSPITAL

Westlake, OH

**FOR MORE INFO, CONTACT:**

St. John West Shore Hospital  
 Family Practice Residency Program  
 Pamela Billick,  
 Administrator, GME and CORE  
 440-827-5576  
 billick@oucom.ohiou.edu



St. John West Shore is a full service hospital with 11 clinical departments and 25 subspecialties, with the capacity for 248 inpatients and a medical staff of nearly 500 physicians. St. John West Shore, which opened in 1981 from the merger of St. John's Hospital and Bay View Osteopathic General Hospital, is a partnership of University Hospitals Health System and The Sisters of Charity of St. Augustine Health System. The hospital provides all the luxuries of a tertiary care medical center, with the hospitality and intimacy of a community hospital.

Our Family Practice Residency Program is a three-year program including a one-year osteopathic internship. The program includes formalized teaching service with daily attending rounds, a Family Practice Didactics curriculum, and lecture series which include topics such as new medical advances, medical controversies and case presentations. Residents conduct weekly board reviews and attend department of Family Practice meetings which focus on quality assurance, interdepartmental reports and protocols. Family Practice residents also attend Ohio University Resident education days, monthly didactics with other Family Practice residents throughout Ohio and gain experience in the business and administrative aspects of healthcare. Family Practice residents build a panel of patients to follow throughout their training. Our program emphasizes Osteopathic Manipulative Medicine in the Clinic.

St. John West Shore is located in Westlake, Ohio, a western suburb of Cleveland along the shores of Lake Erie. Our area offers all aspects of living in a close proximity, including city, country or suburban. Westlake has a newly opened outdoor shopping center which includes shops, restaurants and cafes, book store, luxury apartments and office space.

Our program attracts students, interns and residents who will take initiative for their learning and responsibility for their patients. We look for students who can excel not only academically, but also clinically. Strong interpersonal skills are important, as well, for communicating with patients and families.

Salary	Paid Time	Off
OGME 2	\$43,809	21
OGME 3	\$44,745	21
OGME 4	\$46,158	21
OGME 5	\$47,763	21

**BENEFITS**

- Educational stipend for funding of expenses such as books, journals, PDA, Board Review Courses, Out of Town conferences, and Local Seminars.
- Moving allowance of up to \$1,000
- Medical and Dental Health Insurance: Monthly premium paid for the trainee by the hospital.
- AOA membership
- Westlake Recreation Center membership
- State of Ohio Medical Licensing Reimbursement
- Liability Insurance
- Family friendly environment



## UNION HOSPITAL FAMILY MEDICINE RESIDENCY

Terre Haute, IN

**FOR MORE INFO, CONTACT:**

*Union Hospital Family Medicine  
Residency Program  
Vicki Miller, Coordinator  
1513 North 6½ Street  
Terre Haute, IN 47807  
800-264-4717 or 812-238-7632  
www.LugarCenter.org*

Our unique certified rural and international tracks combined with superb facilities and faculty insure that our graduates are the best prepared physicians they can be. We prepare them to go into rural, underserved and international situations where most dare not to go. They go ready to deal with 95% of all pathology they find and 100% of what is preventable. Whether delivering babies in rural Indiana or comforting the terminally ill in remote Africa, our physicians are on equal footing.

Our state of the art electronic medical record, advanced informatics and cutting edge hardware give our "country" doctors every advantage they will need to set the standard of care in any community they choose. With our strong emphasis on chronic disease management we are creating physicians whose patients will be the envy of those less well prepared.

Located in the laid back Wabash Valley where the people are friendly, crime and traffic are minimal and real estate is dirt cheap, you will think you have died and gone to heaven.

## The Doctor Job

### PERSONAL STATEMENT SERVICE

A good personal statement can mean the difference between a Match and a Miss. Avoid the clichés and pitfalls that program directors hate and get professional editing of your personal statement or counseling towards the creation of a personal statement from scratch. With our help, you can get into the residency program of your choice.

[www.TheDoctorJob.com](http://www.TheDoctorJob.com)  
1.800.591.4842



# BAPTIST HEALTH SYSTEM

Birmingham, AL

## FACTS AT A GLANCE

- Outstanding ABIM pass rate over past 5 years.
- Residents have excellent track record in obtaining positions in outstanding Fellowship programs nationally or securing attractive private practice opportunities.
- 2 hospital teaching program provides exposure to broad base of faculty specialty areas.
- 2 hospital teaching program provides wide diversity in patient population and educational experiences.
- Excellent salary and benefit package including generous book allowance, PDA provided, financial support for educational conferences and board review course in final year and generous food and housing allowance

## ROTATION SCHEDULE

### PGY-1

- General Internal Medicine (6 months)
  - IM Staff Service 4 of these months)
- Cardiology (1 month)
- Nephrology (1 month)
- Pulmonary Medicine (1 month)
- Neurology (1 month)
- Emergency Medicine (1 month)
- Ambulatory IM (1 month)

### PGY-2 AND PGY-3

- Ambulatory electives (2 months)
- Block electives (2 months)
- Cardiology (3 months)
- Critical Care (2 months)
- Endocrinology - Ambulatory (1 month)
- Gastroenterology (1 month)
- General IM Service (6 months)
- Geriatrics (1 month)
- Hematology/Oncology (1 month)
- Infectious Disease (2 months)
- Nephrology (1 month)
- Principles of Research/Interpretive Skills (1 month)
- Sports Medicine/Rheumatology (1 month)



**ELIZABETH ENNIS, M.D., FACP**  
Program Director

## OVERVIEW

The Baptist Health System (BHS) Internal Medicine Residency Program has prepared residents for the practice of Internal Medicine and its subspecialties since 1972. Our program combines academic excellence with a community hospital environment to provide the resident with the best features of traditional university and community programs. Our two tertiary care teaching hospitals, Princeton Baptist Medical Center and Trinity Medical Center, are the sites where residents deliver care for patients with challenging clinical problems. Our diverse patient population allows the resident to see the spectrum of both common and uncommon disease processes and to learn important diagnostic skills, develop clinical judgment, and practice evidence-based medicine. Our didactic curriculum, with two hours of educational sessions daily, includes case-based lectures on topics important to the general internist as well as those preparing for subspecialty training.

Our residents excel academically and are required to prepare case reports yearly. They consistently demonstrate excellent performance on the American Board of Internal Medicine certifying examination and those who seek subspecialty fellowships have been successful in obtaining positions, in their chosen subspecialty, at a variety of prestigious institutions. For the medical student seeking a stimulating, challenging and collegial Internal Medicine program, BHS has much to offer.

## THE PROGRAM

Internal Medicine residents participate in the care of a diverse patient population derived from the private practices of faculty members, referrals from outlying areas, and from the housestaff clinic. Inpatient service assignments are split between the Princeton campus and the Trinity campus. Rotations on subspecialty medicine services are required in addition to rotations on general internal medicine services. Elective months in areas of particular interest are provided. Experience in critical care is obtained on all inpatient services, as residents follow their own patients in the intensive care units, and can be supplemented by a rotation in critical care. Ambulatory training is emphasized throughout the

## FOR MORE INFO, CONTACT:

Baptist Health System, Inc.  
Susan Elders, Program Coordinator  
Residency Program in Internal Medicine  
840 Montclair Road  
Birmingham, AL 35213  
205-592-5759 or 800-247-7404  
susan.elders@bhsala.com

three-year program, with a weekly continuity care clinic beginning in the first year. During the second year this increases to twice weekly. Block rotations broaden the ambulatory care experience. In addition, many traditional inpatient rotations have ambulatory components.

The patient-centered clinical training that serves as the basis for the BHS Internal Medicine residency is supplemented and strengthened through a regular series of lectures derived from a core curriculum of subjects important for all internists to understand. Morning report, journal club, and non-clinical conferences on ethics, informatics and practice management issues help round out the educational experience of our residents. Excellent medical libraries staffed by full-time librarians are available at both Princeton and Trinity, and computer facilities for use in literature searches as well as for other educational purposes are accessible to residents at all times.

The faculty include outstanding teachers and clinicians with years of experience in both academic medicine and private practice. A core of faculty members with a full-time commitment to the program in each hospital is supplemented by excellent and enthusiastic volunteer faculty.

Financial support is provided to PGY-2 and PGY-3 residents for approved scientific meetings as well as a board review course during the final year of training. Associate membership in the American College of Physicians is sponsored by BHS.

Physicians who successfully complete an internal medicine residency at BHS have a variety of attractive career options. Practice opportunities for internists at BHS or elsewhere in the state and region are numerous. Those graduates of our program who have chosen to pursue subspecialty training have obtained fellowships in excellent institutions, and outstanding residents may be given the opportunity to spend a fourth year as a Chief Medical Resident and Instructor in Medicine in our program, with faculty level responsibilities and autonomy.

# MARICOPA INTEGRATED HEALTH SYSTEM/MARICOPA MEDICAL CENTER

Phoenix, AZ

## FACTS AT A GLANCE

### AFFILIATIONS

- Mayo Clinic Scottsdale, University of Arizona

### NUMBER OF INTERNS

- 14 Categorical
- 4 Preliminary
- Over 600-Bed Facility with Medicine, Surgery, Obstetrics, Pediatrics, Psychiatry, Radiology, Medicine/Pediatrics, Orthopedics & Emergency Medicine
- Dedication to underserved population
- Full 5-year ACGME Accreditation
- Consistently among highest ABIM pass rates in the Southwest

## ROTATION SCHEDULE

### PGY-I (4-WEEK BLOCKS)

- 6 months inpatient medicine
- 1 month medical ICU
- 1 month cardiac ICU
- 1 month emergency medicine
- 1 month ambulatory care
- 1 month night float
- 1 month of elective

### PGY-II (4-WEEK BLOCKS)

- 4 months inpatient medicine
- 1 month medical ICU
- 1 month medical consults to emergency medicine
- 1 month ambulatory care
- 5 months of electives including 2 weeks of dermatology

### PGY-III (4-WEEK BLOCKS)

- 1 month inpatient medicine
- 1 month medical ICU
- 1 month cardiac ICU
- 1 month geriatrics
- 1 month neurology
- 1 month medical consults to emergency medicine
- 6 months of electives



**JAYA M. RAJ, M.D.,**  
Program Director

The categorical internal medicine residency program at Maricopa Integrated Health System (MIHS) has been approved by the Accrediting Council for Graduate Medical Education (ACGME) since 1958. The residency program currently is fully accredited with a five-year cycle, the longest possible by the ACGME. The Department of Medicine oversees approximately 60 residents in medicine and medicine/pediatrics. We also have approximately 15 medical students per month rotating in the Department of Medicine in multiple specialties as well as the medical wards and medical ICU.

Maricopa Medical Center (MMC) has the second largest teaching hospital in the state of Arizona, is currently licensed for more than 600 beds, and serves as a Level I pediatric and adult trauma center. The hospital also has the only burn center within the state of Arizona. MIHS services one of the state of Arizona's AHCCCS plans (Arizona Health Care Cost Containment System), the Arizona managed care/Medicaid system. MIHS serves a predominately underserved population at the hospital and its Comprehensive Healthcare Center (housing subspecialty clinics) and 11 family healthcare centers throughout Maricopa County. MMC represents one of the largest and oldest graduate medical education facilities in Arizona and has trained over 20% of the physicians practicing in Arizona.

The internal medicine residents at MMC are a highly dynamic, inquisitive and interested group of physicians. Although the clinical faculty-to-resident ratio is essentially one-to-one, residents develop excellent clinical decision making skills by assuming primary and management responsibilities for all patients with direct daily supervision and guidance from full-time qualified clinicians/educators. These experiences translate into successful job or fellowship placement after residency. We currently enjoy a 94% three-year rolling pass rate on the ABIM certifying examination - one of the highest in the state.

## FOR MORE INFO, CONTACT:

Jaya M. Raj, MD  
Program Director, Internal Medicine  
2601 E. Roosevelt St., Room #OD10  
Phoenix, AZ 85008  
602-344-1218 602-344-1488 fax  
<http://mihs.org/mededucation/graduate/internal.html>

All residents in the program rotate through all specialties of medicine, which is unique for training programs in Arizona. In addition, residents have at least 40% of their clinical time spent in an ambulatory setting learning the nuances of general and specialty care in the clinic setting. The program utilizes a night float system, which allows residents to excel at learning while adhering easily to ACGME guidelines.

Finally, it should be noted that the internal medicine residency training program at MIHS offers a unique blend of nationally recognized clinical training with the superb lifestyle in 5th largest city in America. Phoenix is a rapidly growing, very dynamic city in the Southwest, which offers many opportunities for growth and pleasure for residents and their families.

In summary, for students seeking to be a part of a long-standing tradition of professional growth and excellence, true Maricopa esprit de corps, and the opportunity to become an excellent internist, we encourage you to visit MIHS and find out for yourself. Please visit us online at <http://mihs.org/mededucation/graduate/internal.html>. We encourage you to become part of the best.

# ST. JOHN WEST SHORE HOSPITAL

Westlake, OH

**FOR MORE INFO, CONTACT:**

St. John West Shore Hospital  
 Internal Medicine Residency Program  
 Pamela Billick,  
 Administrator, GME and CORE  
 440-827-5576  
 billick@oucom.ohiou.edu

**MICHAEL ADORNETTO, D.O.**



Program Director

St. John West Shore is a full service hospital with 11 clinical departments and 25 subspecialties, with the capacity for 248 inpatients and a medical staff of nearly 500 physicians. St. John West Shore opened in 1981 from the merger of St. John's Hospital and Bay View Osteopathic General Hospital. St. John West Shore is a partnership of University Hospitals Health System and The Sisters of Charity of St. Augustine Health System. The hospital provides all the luxuries of a tertiary care medical center, with the hospitality and intimacy of a community hospital.

Our Internal Medicine Residency Program features one on one teaching services with hospital and outpatient rotations, and weekly clinical skills labs. Didactics include specialized Internal Medicine curriculum, noon lectures, weekly block didactics, cancer conferences, interactive resident driven Journal Club, board review courses, and practice management.

Westlake Ohio is a western suburb of Cleveland, near the shores of Lake Erie. Our area includes all aspects of life in a close proximity- country, city and suburban! Residents can enjoy the various landscapes, attractions and activities of the Cleveland Metroparks 21,000 acres. Crocker Park, a newly opened outdoor shopping center, is located just minutes from the hospital and includes shops, restaurants & cafes, book store, luxury apartments and office space.

Salary	Paid Time	Off
OGME 2	\$43,809	21
OGME 3	\$44,745	21
OGME 4	\$46,158	21
OGME 5	\$47,763	21

**BENEFITS**

- Educational stipend for funding of expenses such as books, journals, PDA, Board Review Courses, Out of Town conferences, and Local Seminars.
- Moving allowance of up to \$1,000
- Medical and Dental Health Insurance: Monthly premium paid for the trainee by the hospital.
- AOA membership
- Westlake Recreation Center membership
- State of Ohio Medical Licensing Reimbursement
- Liability Insurance
- Family friendly environment



# SUNY UPSTATE MEDICAL UNIVERSITY

Syracuse, NY

## FACTS AT A GLANCE

- Rotations available in three hospitals within walking distance (private, university and VA)
- LOCATION: Syracuse, NY rated 32nd by "Places Rated Almanac" out of 343 North American metropolitan areas
- A current rolling three-year ABIM board passing rate of 100%
- Ambulatory teaching experiences in a variety of off-campus settings, including an HMO, private offices, a community clinic, and new medical clinic facilities
- Large, public medical school affiliation with over 600 medical students and graduate students

## ROTATION SCHEDULE

### PGY 1 (12 MONTHS)

- 6 months inpatient wards
- 1 month emergency room
- 1 month ICU
- 1 month ambulatory care block
- 1-1 1/2 months elective/consults
- 1/2 - 1 month night float
- 1 month vacation

### PGY 2 (12 MONTHS)

- 4 months inpatient wards
- 2 months ICU
- 1 month ambulatory care block
- 1 month night float
- 1 month vacation
- 3 months elective/consults

### PGY 3 (12 MONTHS)

- 3 months inpatient wards
- 4 months elective/consults
- 1 month ambulatory care block
- 2 months ICU
- 1 month ER
- 1 month vacation



**VINCENT E. FRECHETTE, M.D.,**  
Program Director

The SUNY Upstate Medical University at Syracuse Internal Medicine Residency Training Program provides an excellent and comprehensive educational experience utilizing three diverse hospital settings on one clinical campus. Our regional medical center, a large private community hospital and the central New York Veterans Administration Medical Center provide us with a considerable variety of clinical exposures. The geography of the Syracuse metropolitan area allows our program to draw from a seventeen county population of over 1.5 million people while enjoying the lifestyle of an intimate and comfortable smaller city.

Our expanding committed full-time faculty are involved in patient care, teaching and the full spectra of medical research. As a medical center, we are leaders in the development of scientific and health care management innovations which are recognized across the nation. Additional motivated, voluntary faculty complement our teaching abilities. We are quite able to provide one-on-one training for our residents and students--a commitment we are proud to make. The Department of Medicine is organized into 9 divisions. General Medicine, the largest, provides our residents with an extensive exposure to Ambulatory Internal Medicine, as well as maintaining a large referral base for our consulting subspecialists. We have fellowship training in the major subspecialties of Internal Medicine.

We offer two training programs within the Department of Medicine. Our three year categorical program provides extensive training in both the traditional hospital setting as well as a variety of outpatient ambulatory sites in primary and tertiary care. Our preliminary year program offers extensive exposure to medicine and prepares people for further training in other specialties. Electives in primary care, women's health and sports medicine allow participants more time in primary care settings with greater exposure to topics such as preventive medicine, adolescent health care, breast care, and biopsychosocial medicine.

The SUNY Upstate Medical University at Syracuse continues to grow. In addition to our \$52 million Concentrated Care facility, state of the art Emergency Department and \$14 million library, a new lobby and entrance to University Hospital with an enclosed walkway to the new 1200 space parking garage was recently dedicated. When completed in 2007, the new five-story, 46,000-square-foot Setnore Academic Building will contain state-of-the-art space that supports and reflects medical education in the 21st century. The Clinical Skills Teaching Center will include 22 exam rooms, closed-circuit monitoring, and state-of-the-art equipment. Our ambulatory care facilities, including a Joslin Diabetes Center, are located within a three block walk or short shuttle ride to University

## FOR MORE INFO, CONTACT:

SUNY Upstate-Syracuse  
Vincent E. Frechette, MD, Program Director  
750 East Adams St.  
Syracuse, NY 13210  
315-464-4506- 315-464-4484 fax  
IMEDINFO@upstate.edu  
www.universityhospital.org/medicine

Hospital. These major construction projects have reflected our continued inpatient and outpatient population growth. At University Hospital alone the Department manages over 3,700 admissions a year and over 45,000 ambulatory patient visits.

Reflecting the changing sociodemographics of medicine and medical education, we provide yearly ambulatory care block rotations for the resident physicians. Residents are given training in outpatient gynecology, behavioral medicine, sports medicine, ambulatory patient management techniques, and preventive medicine such as sigmoidoscopy. This affords a much broader experience than the traditional exclusive inpatient focus. Third year Residents have the choice of working in private office settings, as well as the traditional hospital ambulatory care sites. Our major ambulatory care facilities utilize the Firm system, modeled after the group practice. Residents work consistently with teams of attendings, mid-level practitioners, and nurses, and develop panels of patients for whom they are primarily responsible.

Considerable research is ongoing in the Department of Medicine and the University as a whole. Large projects in retrovirology, clinical cancer treatment, the pathophysiology of *Helicobacter pylori*, the management of chronic hepatitis, the genetics of systemic lupus erythematosus, cellular and clinical cardiac electrophysiology, clinical AIDS trials, and renal tubular membrane transport are just a few of the examples of ongoing research projects within the Department of Medicine.

The city of Syracuse was ranked in the top 10% of Best Places to live in the most recent edition of the Prentice Hall Travel Places Rated Almanac. It provides safe and affordable housing in an urban setting, with museums, a superb symphony orchestra, a nationally recognized resident professional theater, major collegiate sports, minor league baseball and hockey, and easy access to both the Adirondack Park and the Finger Lakes Region. Syracuse can provide its inhabitants multiple ways of enjoying their free time.

The SUNY Upstate Medical University at Syracuse Department of Medicine is proud of its residency training program. It has a long tradition of educating physicians who do very well in General Internal Medicine or go on to train successfully in the subspecialties of medicine. Our graduates perform well in the Board examinations (100% rolling 3 year average as of 2005) and compete successfully for fellowship training. We plan to continue to provide an excellent educational milieu as we grow and continue to meet the challenges of health care delivery, education and research in the 21st century and beyond.

**UNIVERSITY AT  
BUFFALO (CATHOLIC  
HEALTH SYSTEM-  
SISTERS OF CHARITY)**

Buffalo, NY

**FOR MORE INFO, CONTACT:**

Mercy Hospital of Buffalo  
Michelle Wahl, Program Coordinator  
Department of Medicine  
565 Abbott Road  
Buffalo, NY 14220  
716-828-2577 716-828-2744 fax  
mwahl@chsbuffalo.org  
www.chsbuffalo.org

The Catholic Health System in Buffalo, NY offers a fully-approved, ACGME-accredited three-year training program in Internal Medicine. This program is designed to satisfy the requirement for certification of the American Board of Internal Medicine ([www.abim.org](http://www.abim.org)). Graduates may also practice as qualified internists or gain entry into subspecialty fellowships.

Affiliated with the University at Buffalo, (<http://wings.buffalo.edu/smbbs/GME/applicants.htm>), the program is based at Sisters of Charity Hospital with required rotations also at Mercy Hospital of Buffalo. In addition to rotations in general medicine and the critical care units, a comprehensive list of subspecialty electives are offered. One research elective is offered in each of the PGY II and III years.

Benefits include fully-paid medical and preventive dental insurance, ACP membership reimbursement and UpToDate subscriptions for all residents, reimbursement (up to \$150) for a Personal Data Assistant for PGY I, ACP annual meeting attendance as a PGY II and an out of town board review course for PGY III. Soarian wireless clinical access (Electronic Medical Record) is available at both Sisters of Charity and Mercy Hospitals.

We would be very interested to meet you and we invite you to see what our program is all about!  
Khalid J. Qazi, MD, FACP - Program Director



DEDICATION. EXPERIENCE.  
**PASSION.**

Discover the difference a UNMC residency can make in your career. Since 1998, our program has had a 100% pass rate on the Internal Medicine board examination (ABIM). Clinical excellence, dedicated faculty and outstanding resources are just a few of the ways in which we prepare our residents for success. Plus, with a cost of living at 12% below the national average, living in Omaha is easy on your budget so you can concentrate on your success.

**For more information, visit  
[www.nebraskamedicine.com](http://www.nebraskamedicine.com)**

982055 Nebraska Medical Center  
Omaha, NE 68198-2055 • 402.559.7268  
[imresidency@unmc.edu](mailto:imresidency@unmc.edu)

UNIVERSITY OF  
**Nebraska**  
Medical Center



## UNIVERSITY OF SOUTHERN CALIFORNIA

Los Angeles, CA

**FOR MORE INFO, CONTACT:**

Nancy Gonzalez, M.S. Ed.  
Administrator of Academic Affairs  
323-226-7556 323-226-2657 fax  
uscgme@usc.edu

**RON BEN-ARI, M.D.,**

Program Director

The University of Southern California (USC) Internal Medicine Residency Training Program is situated at one of the largest and most dynamic medical centers in the country. The scope of clinical pathology seen by our residents (both common and rare) is truly unrivaled in the United States, and we provide our trainees with an excellent blend of progressive clinical autonomy and direct faculty supervision. Our residents have extensive opportunities in research and are exposed to both public and private ambulatory and inpatient settings. A new state-of-the-art, one-billion-dollar, 600-bed hospital and outpatient center will become our primary training site in 2007.

The USC Department of Medicine directs Internal Medicine training for a 3-year Categorical Program, a 4-year Medicine/Pediatrics Program and a 1-year Preliminary Medicine Program.



YOU'VE OPENED YOUR HEART TO MEDICINE.  
**NOW OPEN YOUR  
MIND AT UNMC.**

Our combined Medicine-Pediatrics program offers you the best of both worlds. At UNMC, you receive a first-rate education with research opportunities, a dedicated Children's Hospital and a combined patient clinic, all while earning a competitive salary. Plus, with a cost of living at 12% below the national average, living in Omaha is easy on your budget so you can concentrate on your success.

**For more information,  
visit [www.unmc.edu/gme](http://www.unmc.edu/gme)**

982055 Nebraska Medical Center  
Omaha, NE 68198-2055 • 402.559.7268  
[imresidency@unmc.edu](mailto:imresidency@unmc.edu)

UNIVERSITY OF  
**Nebraska**  
Medical Center

## NATIONAL INSTITUTES OF HEALTH

Bethesda, MD

**FOR MORE INFO, CONTACT:**

National Human Genome Research Institute  
 Elizabeth K. Garabedian, RN, MSLS,  
 Research Nurse Coordinator  
 301-435-2443 301-435-3495 fax  
 buffy@nih.gov

The National Human Genome Research Institute (NHGRI) offers a three-year residency program in Medical Genetics which is designed to train physicians to diagnose, manage, and counsel patients with genetic disorders. Participants will receive broad experience in clinical genetics, metabolic diseases, molecular genetics, and cytogenetics. The residency program at the NHGRI is unique in several respects. It provides a broad range of clinical opportunities in both common and rare disorders. Training includes experience that highlights the role of genetics in pediatrics, eye diseases, dermatology, internal medicine, obstetrics, and cancer. Rotations are available at the NIH Clinical Care Center and a number of well-known and respected institutions in the nation's capital. The laboratory research experience available to residents and fellows at the National Institutes of Health and other training sites is unparalleled with approximately 4,000 laboratories from which to choose.

**TRAINING SITES:**

- Clinical Center at the National Institutes of Health
- Children's National Medical Center and Research Institute
- Georgetown University Medical Center
- Walter Reed Army Medical Center

**CURRICULUM:**

During the first 18 months of training, residents spend the majority of their time seeing patients in the various clinical settings. During their second year, they continue their patient responsibilities, while becoming affiliated with a laboratory of their choosing and begin designing their own-basic or clinical-research project. During their third year, resident spend most of their time conducting research and have minimal clinical responsibilities.

Trainees attend a number of didactic courses, including Introduction to Medical Genetics, Inborn Errors of Metabolism, Developmental Biology and Human Malformations and Current Topics in Molecular Genetics. Many also attend the Short Course in Medical and Experimental Mammalian Genetics at the Jackson Laboratory in Bar Harbor, Maine, during the month of July.

## GRAND RAPIDS MEDICAL EDUCATION & RESEARCH CENTER

Grand Rapids, MI

**FOR MORE INFO, CONTACT:**

Cathie Hansen, Program Coordinator  
 616-391-1929 or 616-391-2100  
 Cathie.Hansen@Spectrum-Health.org  
 www.grmerc.net

**STEPHEN RECHNER, M.D., FACOG**  
 Program Director

CHECK OUT OUR NUMBERS! Grand Rapids Medical Education & Research Ob/Gyn Residency Program is a leader as a community based, fully accredited program. Our graduates have significant experience in both obstetrics and gynecology. Average numbers for our graduates:

OB: 370	Abd Hyst: 92
Csec: 377	Vag Hst: 101
Vacuum: 28	Pel. Floor: 151
Forceps: 29	Hysteroscopy: 118
Vag U/S: 229	

Our residents receive training from on-site subspecialists in MFM, REI, GynOnc as well as UroGyn. Though a significant number of our graduates choose private practice, we do have some that have been accepted into prestigious fellowship programs in MFM, UroGyn and Gyn Onc. Additionally, some of our recent graduates have chosen academic positions at universities. For the past four years our graduates have had a 100% pass rate on their ABOG written exam.

Our program is located 45 minutes from the sandy beaches of Lake Michigan and West Michigan offers loads of outdoor activities during all four seasons.

Why not check out our program further? You won't be sorry!

*Affiliated with Michigan State University*  
 Number of positions: 8/year  
 Years of training: 4



## SAINT FRANCIS HOSPITAL AND MEDICAL CENTER

Hartford, CT

**FOR MORE INFO, CONTACT:**

*Saint Francis Hosp & Med Ctr  
Mary Jane Michaels,  
Residency Coordinator  
114 Woodland Street  
Hartford, CT 06105-1299  
860-714-5170 860-714-8008 fax  
mmichael@stfranciscare.org*

**HOWARD SHAW, M.D.,**

*Program Director*



The Department of Obstetrics and Gynecology at Saint Francis Hospital and Medical Center offers a fully accredited, four-year residency program. It includes four years of graduate education curriculum, including thirty-six months on obstetrics and gynecology services. The additional twelve months of training include intensive rotations in all subspecialties in our fully developed divisions of Reproductive Endocrinology, Maternal Fetal Medicine, Gynecologic Oncology, Urogynecology and a one-month elective during the third year.

Saint Francis Hospital and Medical Center is located in Hartford, the capital city of Connecticut. Working in Hartford offers the experience of a city hospital, along with the charms and splendors of the New England countryside: sparkling rivers and shoreline, centuries of history and culture, and an endless array of interesting sights to enjoy.

Entry into the program is made through the National Residency Match Program (NRMP) utilizing the Electronic Residency Application System (ERAS). For more information about the program, visit [www.saintfranciscare.com](http://www.saintfranciscare.com).

## UNIVERSITY OF ARKANSAS

Little Rock, AR

**FOR MORE INFO, CONTACT:**

*Esther M. Mahnken,  
Program Administrator  
501-526-7569  
mahnkenesther@uams.edu  
<http://www.uams.edu/obgyn/>*

**NANCY ANDREWS-COLLINS, M.D.**

*Program Director*

Today is your opportunity to join the prestigious Department of Obstetrics and Gynecology Residency Program offered by the University of Arkansas for Medical Sciences (UAMS), Little Rock, Arkansas. The four-year Residency Program offers rotations in Obstetrics, Gynecology, Gynecologic Oncology, Urogynecology and Reproductive Endocrinology, Neonatal Intensive Care Unit, Emergency Medicine, Surgical Services, Pediatric Outpatient, and Geriatric Gynecology. Residents also participate in patient care within the University Women's Clinic. Weekly didactic days include Grand Rounds, M&M Conference, and Team Based Learning. Journal Club, Basic Science Lectures, and other specialty conferences are offered on a once-a-month basis.

UAMS is located in the heart of Little Rock, and offers live theater presentations, Broadway musicals, Symphony Orchestras, the Arkansas Arts Center, and much more, along with a myriad of local and international dining establishments and cuisines. The growing River Market area offers day and night life, and includes the President Clinton Library. Year round indoor and outdoor recreation is available locally and state wide.

Contact us today for an opportunity to come to Arkansas - the Natural State.

## UNIVERSITY OF TENNESSEE COLLEGE OF MEDICINE

Chattanooga, TN

**FOR MORE INFO, CONTACT:**

Shanon Sims, Residency Coordinator  
979 E. 3rd St., Suite C-720  
Chattanooga, TN 37403  
423-778-7515 423-267-6244 fax  
www.utcomchatt.org/obgyn.html

**JOSEPH H. KIPKASA, M.D.,**

Residency Director



One of the nation's most scenic cities hosts this unique, hybrid residency program that combines the advantages of a community practice-driven program with that of an academic environment. The department offers a four-year, fully accredited residency in Obstetrics and Gynecology with 4 residents at each level.

A full range of services is available at the primary site, Erlanger Medical Center, in Chattanooga, Tennessee. Erlanger is the regional referral center for Southeastern Tennessee and North Georgia, with adult level I trauma care and intensive care capabilities, level III neonatal intensive care, and adult and pediatric sub-specialists. The facility also hosts residency programs in Family Medicine, Internal Medicine, Pediatrics, and Surgery. Our affiliation with the University of Tennessee provides continued opportunities for teaching of medical students and ample clinical research. The community hospital provides for regular interaction with OB/GYN physicians in private practice and modern technology, such as the DaVinci robotic surgery system.

Residents at the University of Tennessee experience a broad range of clinical medicine in all specialties of Obstetrics and Gynecology including benign gynecology, ambulatory care, gynecologic oncology, reproductive endocrinology and infertility as well as low and high-risk obstetrics. Our residents routinely record surgical numbers that are well above those of most other residency programs; and work as part of a 4 state referral team for high-risk obstetrics. A unique relationship between community physicians and the residency program offers an opportunity to experience and learn from a wide variety of practitioners.

Chattanooga enjoys a unique reputation for the renewal of its downtown area, which has served as a model for numerous other cities in the region. There are multiple opportunities for outdoor recreation from mountain biking and hiking the ridges, to whitewater kayaking at the former Olympic venue on the Ocoee River.

Electives for 4th year medical students, both visiting and with the UT system, are available.

## BAPTIST HEALTH SYSTEM

Birmingham, AL

**FOR MORE INFO, CONTACT:**

Baptist Health System, Inc.  
Deborah Wilhite, Program Coordinator  
800 Montclair Road  
Birmingham, AL 35213  
205-592-5052  
deborah.wilhite@bhsala.com

**KIM PARKER, M.D., FACP,**

Program Director



**ABOUT THE PROGRAM**

The Baptist Health System, Inc. (BHS) and its' teaching hospitals at Princeton Baptist Medical Center and Trinity Medical Center offer a four-year program in clinical and anatomical pathology, which fulfills the requirements of the American Board of Pathology for combined certification.

The departments process over 17,000 surgical specimens a year from all of the major surgical specialties. The clinical laboratories include advanced methodology and instrumentation. Over 700 different types of clinical laboratory procedures are performed in the two institutions. The faculty includes six pathologists, including several with subspecialty certification. A clinical chemist and a clinical microbiologist who are doctorate level laboratory scientists are also members of the faculty.

During the first two years, the majority of the resident's time is spent in autopsy and surgical pathology rotations at Princeton BMC and Trinity. However, interspersed in these two years, the resident will have six to eight one-month rotations in various areas of the clinical laboratory such as hematology, clinical chemistry, blood bank, and bacteriology.

During the third and fourth years, the resident will continue to acquire knowledge through rotations in general areas of anatomic and clinical pathology at Princeton BMC and Trinity, but will also have rotations in pediatric pathology, forensic pathology, electron microscopy and dermatopathology. Elective time is also scheduled during these two years. At the end of four years of training, the resident will have spent 18 months concentrating on clinical pathology and 30 months with emphasis on anatomical pathology.

**ROTATION SCHEDULE**

**PGY1**

- Anatomical Pathology (8 months)
  - Surgical Pathology/Autopsy
- Clinical Pathology (4 months)
  - Hematology, Chemistry, Blood Bank and Microbiology

**PGY2**

- Anatomical Pathology (7 months)
  - Surgical Pathology/Autopsy
- Clinical Pathology (5 months)

- Chemistry, Cytology, Microbiology, Blood Bank and Immunology

**PGY3**

- Anatomical Pathology (7.75 months)
  - Surgical Pathology/Autopsy (4.5 months)
  - FNA, Forensics, Cytology and Pediatric Pathology (3.25 months)
- Clinical Pathology (4.25 months)
  - Hematology, Chemistry, Immunology, Cytogenetics and Pediatric Pathology

**PGY4**

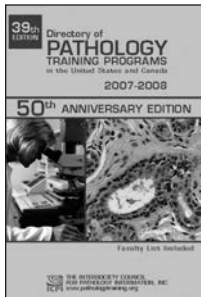
- Anatomical Pathology (6.5 months)
  - Surgical Pathology/Autopsy (4.5 months)
  - Electron Microscopy and Dermatopathology (2 months)
- Clinical Pathology (5.5 months)
  - Microbiology, Hematology, Blood Bank, Immunology and clinical electives

## THE INTERSOCIETY COUNCIL FOR PATHOLOGY INFORMATION

Bethesda, MD

**FOR MORE INFO, CONTACT:**

The Intersociety Council for Pathology Information, Inc.  
9650 Rockville Pike  
Bethesda, MD 20814-3993  
301-634-7200 301-634-7990 fax  
icpi@asip.org  
www.pathologytraining.org



The Intersociety Council for Pathology Information (ICPI) is a nonprofit educational organization sponsored by national pathology societies to serve as a central source of information about pathology to the public, media, and professional and educational organizations. ICPI is invaluable as the initial point of contact for almost all medical students and residents who seek a career in pathology.

ICPI's major activity is the publication of the annual *Directory of Pathology Training Programs in the United States and Canada*. There is also a searchable web version of the *Directory* on ICPI's website [www.pathologytraining.org](http://www.pathologytraining.org). ICPI also answers questions from pathologists and the lay public about pathology and pathology careers. In addition, ICPI distributes an illustrated color brochure "Pathology as a Career in Medicine," which describes the pathologist's role on the clinical team and intimate involvement in patient care problems, the variety of case material, the opportunities to do research and to teach, and the wide scope of career options.

A free copy is available on request. A web version of the brochure is also available at [www.pathologytraining.org](http://www.pathologytraining.org).

**THE MEMBER SOCIETIES OF ICPI ARE:**

- American Society of Clinical Pathology ([www.ascp.org](http://www.ascp.org))
- American Society for Investigative Pathology ([www.asip.org](http://www.asip.org))
- Association of Pathology Chairs ([www.apcprods.org](http://www.apcprods.org))
- College of American Pathologists ([www.cap.org](http://www.cap.org))
- United State and Canadian Academy of Pathology ([www.uscap.org](http://www.uscap.org))

**ORDER YOUR FREE COPY OF THE DIRECTORY ONLINE AT:  
[WWW.PATHOLOGYTRAINING.ORG](http://WWW.PATHOLOGYTRAINING.ORG)**

## UNIVERSITY OF MINNESOTA

Minneapolis, MN

**FOR MORE INFO, CONTACT:**

University of Minnesota Med School  
Gina Deveney,  
GME Program Coordinator  
Dept of Laboratory Med & Pathology  
420 Delaware St. SE/MMC 609  
Minneapolis, MN 55455  
deveney@umn.edu

**ALAN ROSE, MD FRCPath**

Program Director

The University of Minnesota Department of Laboratory Medicine and Pathology, in conjunction with University and Riverside Campuses of Fairview-University Medical Center, Hennepin County Medical Center, the Veterans' Affairs Medical Center, Abbott Northwestern Hospital, the Hennepin County Medical Examiner's Office, the American Red Cross North Central Blood Services of St. Paul, and Memorial Blood Centers, offers outstanding ACGME-Accredited Graduate Medical Education to Physicians from around the world. The Program's mission is to provide strong basic training in laboratory medicine and pathology and its subspecialties, including cytogenetics, cytopathology, hematopathology, molecular diagnostics, surgical pathology, transfusion medicine/cellular therapy, and basic science & clinical research. Serving as the central hub, the residency program provides three core training avenues: combined anatomic and clinical pathology (4 years), anatomic pathology only (3 years), and clinical pathology only (3 years).

This Program is truly special and unique in its design, which provides equally strong emphasis on clinical and anatomic pathology training. The clinical pathology core curriculum includes clinical chemistry, coagulation, hematopathology, immunopathology, medical microbiology/virology, molecular genetics/cytogenetics, and transfusion medicine / cellular therapy. The anatomic pathology core curriculum incorporates histology with state-of-the-art biotechnology to diagnose surgical, autopsy, and cytopathology cases. Cytopathology training includes the evaluation of gynecologic, non-gynecologic, and fine needle aspiration & biopsy specimens. In addition, trainees become very proficient in fine needle aspiration and bone marrow biopsy techniques. While not required, the residents and fellows are encouraged to explore and participate in clinical / basic science research, with a full spectrum of opportunities in immunology, molecular genetics, cancer biology, cytogenetics, environmental pathology, cell biology, health informatics, and others. Please visit our website at: <http://resmanual.labmed.umn.edu/>

## NEW YORK PRESBYTERIAN HOSPITAL - CORNELL CENTER

New York, NY

**FOR MORE INFO, CONTACT:**

New York Presbyterian Hospital-  
Cornell Center  
Donna M. Galvin,  
Residency Coordinator  
525 E. 68th Street, Room C-302  
New York, NY 10021  
212-746-6464  
dmgalvin@med.cornell.edu

**DEBRA G.B. LEONARD, M.D., PH.D.,**

Director, Residency Training Program

Thank you for your interest in our residency program! I am very pleased to introduce you to our program and to describe the attributes that make it a special place to undertake the next stage of your medical training.

The Pathology Residency Training Program of New York Presbyterian Hospital-Cornell Campus, consists of a large, diversified faculty and individually tailored programs. Our faculty members are completely committed to the education of our residents; they work closely with house staff and are there every step of the way to help you become a competent, confident pathologist.

Our programs are tailored for those interested in an academic career in pathology, or in the practice of modern general pathology in the community. In addition, a training program in experimental pathology is available for those individuals who desire a career in scientific investigation.

The experimental pathology training program is especially suited for graduates of combined MD/PhD programs. The training program is associated with Weill Medical College of Cornell University as well as with Memorial Sloan-Kettering Cancer Center and Rockefeller University. The Medical Center is located along the East River in Manhattan within walking distance of Central Park and the midtown entertainment and shopping areas, major museums, concert halls and the opera house is close by.

We hope that you will come see us in New York to learn more about our training program and to see first hand what we have to offer.

**ROTATION SCHEDULE**

**PGY-1**

- 6 blocks Surgical Pathology
- 2 blocks Autopsy
- 2 blocks Clinical Pathology
- 3 blocks Electives

**PGY-2**

- 3 - 4 blocks Clinical Pathology
- 2 blocks Surgical Pathology
- 3 blocks Gynecologic Pathology or Gastrointestinal Pathology
- 1 block Neuropathology/ Autopsy
- 3 blocks Electives

**PGY-3**

- 1-2 blocks Gynecologic Pathology or Gastrointestinal Pathology
- 1 - 4 blocks Clinical Pathology
- 1 block Surgical Pathology
- 1 block Neuropathology/ Autopsy
- 3 - 6 blocks Elective

**PGY-4**

- Combination of Clinical Pathology, Surgical Pathology & electives to finish 18/18 requirements

## MIAMI CHILDREN'S HOSPITAL

Miami, FL

**FOR MORE INFO, CONTACT:**

Miami Children's Hospital  
3100 SW 62nd Avenue  
Miami, FL 33155  
305-669-5873  
www.mch.com

**CHRISTIAN C. PATRICK, MD, PhD**

Program Director



Miami Children's Hospital's Pediatric Residency Program offers experience in all facets of pediatric care from the most complex intensive care to the office practice of general pediatrics. The medical staff includes more than 110 specialists representing over 40 pediatric specialties and sub-specialties in a hospital complex that houses 275 beds and provides numerous community-outreach programs.

The three-year residency training program in pediatrics is fully accredited by the Accreditation Council for Graduate Medical Education (ACGME), with participation limited to 69 residents and two chief residents. In addition, fellowships in varying specialties are offered.

The focus of the program is to prepare residents for a lifetime of quality practice either in primary care pediatrics or in the subspecialty of their choosing. During the course of the program, residents assume increasing responsibility for patient care, acquiring clinical expertise, knowledge and skills along the way. Emphasis is placed on providing a balanced training program that ensures residents will be able to undertake independent medical practice in today's rapidly changing healthcare environment.

**ROTATION SCHEDULE**

**PGY-1**

- Ambulatory Services/Emergency Medicine (8 weeks)
- Inpatient Pediatrics (Cardiology, Pulmonology, Nephrology, Neurology and Hematology) (36 weeks)
- Newborn Nursery (4 weeks)
- Vacation (4 weeks)

**PGY-2**

- Ambulatory Services/Emergency Medicine (8 weeks)
- Intensive Care Units PICU/NICU (12 weeks)
- Selectives: Surgery/Orthopaedics, Endocrinology, Cardiology (10 weeks)
- Electives (10 weeks)
- Neuro-Developmental (4 weeks)
- Adolescent Medicine (4 weeks)
- Vacation (4 weeks)

**PGY-3**

- Ambulatory Services/Emergency Medicine (6 weeks)
- Perinatology (2 weeks)
- Inpatient Pediatrics (8 weeks)
- Intensive Care Units PICU/NICU (8 weeks)
- Rural Community Pediatrics (2 weeks)
- Electives (18 weeks)
- Primary Care/Private Practice (4 weeks)
- Vacation (4 weeks)



**UNIVERSITY OF  
TEXAS MEDICAL  
BRANCH -  
GALVESTON**

Galveston, TX

**FOR MORE INFO, CONTACT:**

*UTMB Galveston  
Yvette Schulz, Program Coordinator  
Preventive Medicine Residencies  
301 University Blvd  
Galveston, TX 77555-1150  
409-772-5845  
ryschulz@utmb.edu  
www.utmb.edu/pmr*

The Office of Preventive Medicine Residencies at the University of Texas Medical Branch at Galveston is currently accepting applications for the Preventive Medicine residencies and the combine Internal Medicine/Preventive Medicine residencies. July 2008 positions available.

The Office of Preventive Medicine Residencies at UTMB Galveston is the only university in the U.S. which offers all three ACGME accredited civilian residencies in Aerospace Medicine, General Preventive Medicine and Occupational Medicine. Upon completion, residents earn a Master of Public Health degree accredited by the Council on Education for Public Health. Qualified applicants must have completed a PGY-1 clinical year in an ACGME U.S. accredited residency with six months of direct patient care. Opportunities also available for combined Internal Medicine and Preventive Medicine residencies. No PGY-1 clinical year required. Eligibility to sit for both Boards upon completion. For residency requirements and detailed information please visit the website at [www.utmb.edu/pmr](http://www.utmb.edu/pmr) or Contact: Yvette Schulz. Application deadline: October 31, 2007. UTMB is an equal opportunity, affirmative action institution which proudly values diversity. Candidates of all backgrounds are encouraged to apply.

# BANNER GOOD SAMARITAN MEDICAL CENTER

Phoenix, AZ

## FACTS AT A GLANCE

- Largest acute care facility in Arizona
- Major teaching affiliate for the University of Arizona College of Medicine's Phoenix Campus
- Number of Residents: 16
- Diverse patient population

## ROTATION SCHEDULE

### PGY-1

- Internal Medicine
- Emergency Medicine
- Neurology
- Adult Inpatient Psychiatry

### PGY-2

- Adult Inpatient Psychiatry
- Chemical Dependency
- Child and Adolescent Psychiatry
- Consultation-Liaison Psychiatry
- Outpatient Psychiatry (continuous part-time)

### PGY-3

- Outpatient Psychiatry (continuous part-time)
- Community Psychiatry
- Consultation-Liaison Psychiatry
- VAMC Outpatient Psychiatry
- Geriatric Psychiatry

### PGY-4

- Outpatient Psychiatry
- Forensic Psychiatry
- Administrative Psychiatry
- Student Health
- Employee Assistance Program
- Elective experiences - Memory Disorders Program, cross-cultural psychiatry, forensics, research, geriatrics, sleep disorders and others



**JAMES B. MCLOONE, M.D.**  
Director of Residency Training

Over the past four decades, the Psychiatry Residency at Banner Good Samaritan Medical Center has provided a broadly based training program allowing our residents to acquire the most contemporary clinical skills and a solid foundation of knowledge for lifelong professional development. Our educational philosophy genuinely considers an integrated biopsychosocial model the cornerstone of understanding and treating patients.

Good Samaritan is an academically oriented clinical setting with over 250 residents and fellows in all the major specialties and an enthusiastic and experienced hospital-based faculty. The manageable size of our Psychiatry Residency fosters a genuine spirit of cooperation and participation between residents and attendings to ensure the best opportunities for learning during the most important stage of your professional development.

The Medical Center's 60 acre campus includes a modern 12-story inpatient complex and state-of-the-art diagnostic, emergency and support services. The clinical Psychiatry programs at Good Samaritan include a 22 bed adult inpatient unit and an attractive outpatient clinic. Our active consultation-liaison and emergency psychiatric services allow routine interaction with nonpsychiatric colleagues throughout the Medical Center.

Our residents are exposed to an excellent mixture of public and privately insured patients with diverse economic and sociocultural backgrounds and every type of Psychiatric illness, level of acuity and age. Our Psychiatry Residency Program also offers required and elective experiences at other well-supervised nearby clinical sites including the Veteran's Administration Medical Center, Phoenix Children's Hospital, a community mental health clinic, forensic settings, Arizona State University, and outreach to rural areas. The recently established Alzheimer's Institute and Memory Disorders Clinic at Good Sam provide clinical and neuroscientific research opportunities.

These excellent clinical experiences are complemented by daily organized lectures, seminars and conferences that are intellectually stimulating and address the rapidly expanding body of information in modern

## FOR MORE INFO, CONTACT:

Banner Good Samaritan Medical Center  
Jo Russo, Residency Coordinator  
925 E. McDowell Road, 4th Floor  
Phoenix, AZ 85006  
602-239-6880 602-239-6988 fax  
Jo.Russo@bannerhealth.com  
www.bannerhealth.com

Psychiatry. A "core curriculum" of biobehavioral sciences is provided in a progressive fashion through all years of training and includes in-depth study of neurosciences, mental health and psychopathology as well as theoretical and practical aspects of the contemporary psychotherapies, social rehabilitation and advanced pharmacologic and other somatic interventions. Supervision remains a key component of our Psychiatry Residency Program and includes several hours of individual and group experiences each week.

Good Samaritan Medical Center is the major teaching affiliate of the University of Arizona College of Medicine Phoenix Campus and our residents routinely interact with third and fourth year medical students.

Phoenix is the urban center of the nation's fifth largest metropolitan area. The Valley of the Sun epitomizes the integration of progressive development, modern architecture and beautiful scenery with the traditions and character of the Southwest. Housing remains affordable and there are recreational and cultural activities for every taste.

Interested applicants are encouraged to visit our website at [www.bannerhealth.com](http://www.bannerhealth.com) and to call (602-239-6880) or request by e-mail a more detailed packet of information. We participate in ERAS and the Match. Of course, a visit to tour our facilities, meet our residents and faculty and see the area is the best way to appreciate the excellent opportunities available in Psychiatry at Good Samaritan.

## THE INSTITUTE OF LIVING/HARTFORD HOSPITAL

Hartford, CT

**FOR MORE INFO, CONTACT:**

*Institute of Living/Hartford Hospital  
Sandy Tolisano, Residency Coordinator  
200 Retreat Avenue  
Hartford, CT 06106  
860-545-7183  
stolisah@harthosp.org*

**ADRIENNE BENTMAN, M.D.,**



*Director of  
Residency  
Training*

**ABOUT THE PROGRAM**

The 180-year-old Institute of Living is a psychiatric landmark and one of the country's leading mental health centers. The third mental health facility established in the U.S., it is today part of a nationally recognized medical complex anchored by Hartford Hospital, the largest hospital in Connecticut. The Institute is home to the Olin Neuropsychiatry Research Center, a state-of-the-art facility conducting leading-edge research in schizophrenia and related severe psychiatric disorders. The Institute has a proud tradition of psychiatric education dating back to the mid-20th century, and our faculty and graduates are accomplished and respected figures in the profession.

**PHILOSOPHY OF TRAINING**

Our goal is to educate residents in the full array of mental health therapies through a curriculum that recognizes the dynamic connection between psychotherapy and neuropsychiatry. Residents gain knowledge and experience in providing a full spectrum of services to patients of all ages and backgrounds and with a broad array of disorders. Participants learn from nationally prominent professionals in a community committed to incorporating into diagnosis and treatment the familial, social, spiritual and cultural factors that are part of each person's mental and emotional experience.

**ROTATION SCHEDULE**

**PGY-1**

- 4 months primary care medicine (internal medicine/pediatrics)
- 3 months inpatient psychiatry
- 2 months each neurology and inpatient psychiatry (biopsychosocial concentration)
- 1 month addictions

**PGY-2**

- 4 months inpatient psychiatry
- 2 months each child and adolescent, geriatric, and consultation/liaison psychiatry
- 1 month each emergency psychiatry/crisis intervention and inpatient psychiatry (teaching and supervisory concentration)
- 12 months outpatient psychiatry (10%)

**PGY-3**

- 12 months outpatient psychiatry (80%)
- 12 months community psychiatry (20%)

**PGY-4**

- 6 months service chief (90%) and outpatient psychiatry (10%)
- 6 months electives/research (90%) and outpatient psychiatry (10%)

## UNIVERSITY OF CONNECTICUT

Farmington, CT

**FOR MORE INFO, CONTACT:**

*Univ of Connecticut Health Center  
Terri Carrier, Residency Coordinator  
263 Farmington Avenue, MC1935  
Farmington, CT 06030-1935  
860-679-4733  
residency@psychiatry.uhc.edu  
http://psychiatry.uhc.edu*

**LEIGHTON Y. HUEY, M.D.**



*Professor, Chairman,  
and Director of  
Residency Training*

Since 1998, under new leadership and with an influx of many new faculty, the Department of Psychiatry is moving in a distinctly different and innovative direction. The integration of clinical, training, research, and community outreach characterizes these remarkable changes. Three major research centers historically have shaped our efforts. These centers are: The Alcohol (Addictions) Research Center (ARC), the Neuropsychopharmacology Treatment, Research, and Training Center (NTRTC), and the Center for the Study of High Utilizers of Health Care (CSHUHC). The latter two centers have been integrated into the Center for Biobehavioral Research and Education (CBRE). In addition, the establishment of the new University of Connecticut Child and Adolescent Division in 2006, with the first child residency class entering July 2007, is already having profound and positive effects on the entire Department and its programs.

As the State's medical school, we envision ourselves as part of the public sector. We are a support and a resource to other State of Connecticut systems and to our community. As an academic department with gifted trainers, teachers, clinicians, basic scientists, and clinical researchers, we are in a position to not only advance the knowledge in our field, but also to operationalize that knowledge to improve the level of care within Connecticut. As a training system, we have the opportunity to educate public-sector-oriented Clinician-Scientists who represent the future clinical, research, and leadership workforce of this State or any other state. And as a clinical academic system, we have developed a cadre of excellent faculty who provide the most contemporary and sophisticated approaches to assessment, treatment, and follow-up based upon the research and clinical literature. Thus, treatment is individualized, focused on prompt relief of a problem, results in reduction of suffering and illness burden, achieves improved outcomes, can be accomplished at a reasonable cost, and still retains the "art" of what it means to be a compassionate clinician. We want our trainees to learn this approach. We are a highly resident-friendly program. See our website for more specific information on our innovations.

**ROTATION SCHEDULE**

**PGY-1**

- (includes 4 wks vacation)
- 4 months Internal Medicine
  - 2 months Neurology
  - 1 month JDH Special (includes observed neuropsychological testing, training in the use of rating scales & structured interviews, F-MRI, strategic interviewing, vagal nerve stimulation, partial hospital group therapy)
  - 5 months Inpatient Psychiatry including Addiction Psychiatry (including outpatient continuity-of-care cases with psychotherapy supervisors)

**PGY-2**

- (includes 4 wks vacation)
- 2 months Consultation-Liaison Psychiatry
  - 1 month Emergency Psychiatry
  - 2 months Child/Adolescent Psychiatry
  - 7 months Inpatient Psychiatry including Geriatric Psychiatry)
  - Research - Afternoons for one month during Inpatient Psychiatry with reduced case-load; Assigned psychotherapy cases with psychotherapy supervisors

**PGY-3**

- (includes 4 wks vacation)
- 12 months outpatient psychiatry with Selectives\* (30% time)
  - Continuity Care Clinics: Assessment/Pharmacotherapy/Combined Psychotherapy; Public Psychiatry -Forensics/Community; Psychotherapies - CBT/Brief/Psychodynamic/Group/Family
  - \*Selectives: Huntington's Clinic, Child, Corrections, Primary Care, Community Clinics, Research, etc.)

**PGY-4**

- (includes 4 wks vacation)
- 6 months Leadership/Continuity Care/Selectives
  - 6 months Selectives/Continuity Cases

# UNIVERSITY OF MASSACHUSETTS MEDICAL SCHOOL

Worcester, MA

## FACTS AT A GLANCE

- A mid-sized residency program (7 residents/year) with a huge faculty (approx 300) assures faculty in most psychiatric subspecialties
- Programs of national distinction in Neuropsychiatric Sciences, Forensic Psychiatry, Psychopharmacology Research, Public Sector Psychiatry, Mental Health Policy, Child Psychiatry, Primate Care Psychiatry and Neuropsychiatry
- Large number of sites and specialty areas for elective work
- UMass residents routinely win competitive fellowships offered by national psychiatry organizations
- Close enough to Boston to enjoy the cultural offerings yet far enough away (45 minutes) to allow for a lower cost of living

## ROTATION SCHEDULE

### PGY-I

- Internal Medicine Wards (2 blocks)
- Internal Medicine for Psychiatry (1 block)
- Medicine Subspecialty Elective (1 block)
- Emergency Medicine (1 block)
- Neurology Ward (1 block)
- Neurology Consult Service (1 block)
- Neuropsychiatry (1 block)
- Emergency Mental Health (1 block)
- Geriatric Inpatient Psychiatry (1 block)
- General Inpatient Psychiatry (3 blocks)

### PGY-II

- Addiction Psychiatry (1 block)
- Consultation Liaison Psychiatry (4 blocks)
- General Inpatient Psychiatry (4 blocks)
- Continuing Care Inpatient Psychiatry (2 blocks)
- Forensic Psychiatry (1 block)
- Selective Rotation (1 block)
- Psychodynamic Psychotherapy (2 outpatients)
- Seminars (8 hrs/wk)

### PGY-III

- Psychodynamic Psychotherapy (4 hrs/wk)
- Cognitive Behavioral Therapy (4 hrs/wk)
- Psychopharmacology Clinic (4 hrs/wk)
- Community Clinic (8 hrs/wk)
- Child Psychiatry (8 hrs/wk)
- Family & Couples Therapy (2 hrs/wk)
- Group Psychotherapy (2 hrs/wk)
- Seminars (8 hrs/wk)

### PGY-IV

- Individual Psychotherapy (8 hrs/wk)
- Psychopharmacology Clinic (4 hrs/wk)
- Chief Residency and/or Electives (28 hrs/wk)
- Seminars (8 hrs/wk)



**SHELDON BENJAMIN, M.D.,**  
Program Director

The UMass Psychiatry Department regards resident education as its highest priority. Nearly 300 faculty insure that our 28 residents receive intensive training in psychodynamic as well as cognitive-behavioral psychotherapies, broad experience in clinical psychopharmacology and neuropsychiatry, and excellent training in all of the traditional aspects of clinical psychiatric practice. Fellowship training is available in child psychiatry, forensic psychiatry, neuropsychiatry, and psychopharmacology, with new fellowships in addiction psychiatry and forensic child psychiatry anticipated in the coming year. We offer a 5-year integrated adult/child psychiatry residency, a 6-year combined Neuropsychiatry program, and specialty tracks in neuropsychiatry, forensic psychiatry, addictions, and psychopharmacology research. We provide ample elective time for trainees to explore one of the many specialty areas available within our department.

Dr. Benjamin's background is in both psychodynamic psychiatry and behavioral neurology. Our associate training director, Caroline Fisher, MD, PhD, is a child psychiatrist with a doctorate in pharmacology. We feel strongly that UMass residents should be trained in traditional psychodynamic psychotherapy, cognitive-behavioral therapy, and neuroscientifically-informed biological psychiatry.

At the cutting edge of psychiatric genetics and imaging, our departmental neuroscience program includes the Brudnick Neuropsychiatric Institute and the Center for Comparative Neuroimaging. Professor and Chair, Douglas Ziedonis, M.D., MPH, nationally prominent in the field of co-occurring disorders, is overseeing the development of a major program in addiction psychiatry. Anthony Rothschild, MD, Brudnick Professor of Psychiatry, coordinates research and training in psychopharmacology. The neuropsychiatry division, under Dr. Benjamin, provides inpatient and outpatient consultation to adults and children with a myriad of brain disorders. The Child Psychiatry Division, directed by Peter Metz, MD, is nationally known for its forensic, outreach, neuropsychiatry, and communities of care wrap-

## FOR MORE INFO, CONTACT:

Univ. of Massachusetts Medical Sch.,  
Dept. of Psychiatry  
Sheldon Benjamin, MD, Program Director  
55 Lake Avenue North  
Worcester, MA 01655  
508-856-4087 508-856-5000 fax  
sheldon.benjamin@umassmed.edu  
www.umassmed.edu/psychiatry/residency/

around programs. The large forensic psychiatry division is at the forefront of forensic and correctional psychiatry research, policy development, and training. With over 850 beds and numerous outpatient clinics, the UMass General Hospital, Public Sector, and Correctional Psychiatry programs are the dominant provider of behavioral healthcare in Central Massachusetts.

Rated by US News as one of the top 4 primary care schools in the country, UMass is home to 44 residency and fellowship programs. The UMass Memorial Healthcare complex includes the medical school, 400-bed tertiary referral hospital, Graduate Schools of Biomedical Sciences and Nursing, ambulatory clinics (including a free standing ambulatory psychiatry building), and Worcester State Hospital. In addition to the Brudnick Neuropsychiatric Institute, the department is also affiliated with the Shriver Center for Developmental Disabilities Research.

Only 45 minutes from Boston, Worcester is close enough to take advantage of Boston's cultural attractions, yet far enough away to allow for a lower cost of living. The Berkshires, the White Mountains, Cape Cod, and the coast of Maine are all a 1 to 2 hour drive away.

We pride ourselves on our flexibility, our willingness to embrace diversity, and the atmosphere of mutual respect engendered by our department.



# BAPTIST HEALTH SYSTEM

Birmingham, AL

## FACTS AT A GLANCE

- Excellent board-pass rate record established by BHS radiology residents.
- Opportunities made available to BHS radiology residents include outstanding Fellowship positions and/or excellent private practice positions.
- State of the art radiographic equipment at both hospitals; CT scanners (including 64 slice), MRI units, PET scanners, fully integrated PAX system and digital radiology.
- 3 hospital teaching program, plus Children's Hospital of Alabama Hospital provide a wealth of educational opportunities and experiences.
- Competitive salary and benefits. Non-salary benefits include generous book allowance, provision of safety aprons and glasses, educational conference allowance including board review course in final year and generous food and housing stipend.

## ROTATION SCHEDULE

### PGY-1

- Inpatient fluoroscopy (1 month)
- Nuclear medicine (2 months)
- Imaging (CT, ultrasound and MRI) (3 months)
- Chest radiology and plain films (2 months)
- O/P radiology (3 months)
- Cardiac radiology (1 month)
- Physics

### PGY-2

- Angiography (3 months)
- Inpatient fluoroscopy (1 month)
- Nuclear medicine (2 months)
- Imaging (CT, ultrasound and MRI) (3 months)
- O/P radiology (2 months)
- Vascular ultrasound (1 month)
- Physics

### PGY-3

- Angiography (3 months)
- Chest radiology (1 month)
- O/P radiology (including 1 month of mammography) (3 months)
- Pediatric radiology (2 months)
- Research (1 month)
- AFIP (1 month)
- Outside elective (1 month)
- Physics

### PGY-4

- Angiography (2 months)
- Nuclear medicine (2 months)
- Imaging (CT, ultrasound and MRI) (1 month)
- O/P radiology (2 months)
- Cardiac radiology (1 month)
- Pediatric radiology (2 months)
- Vascular ultrasound (1 month)
- Research (1 month)



**BIBB ALLEN, JR., M.D., FACR,**  
Program Director

## OVERVIEW

The Diagnostic Radiology Residency Program at the Baptist Health System (BHS)

provides an opportunity for development of the knowledge and technical skill necessary for the practice of diagnostic radiology with emphasis on training in an environment that reflects the clinical practice of radiology. The program provides the credentials, case material and didactic education necessary for certification by the American Board of Radiology.

## THE PROGRAM

The philosophy of the program allows residents to assume a large amount of clinical responsibility while remaining under supervision of the radiology faculty. The complete program includes a clinical year under the supervision of the Transitional Year Program faculty followed by four years of diagnostic radiology. A strong foundation in clinical medicine is provided to ensure residents are well-rounded physicians.

There are three residents at each level of training in the program. PGY-2 applicants to the four-year program must have completed at least one year of clinical training after graduation from an accredited medical school.

Over the four-year program, 34 months of clinical diagnostic radiology rotations are provided at BHS teaching hospitals, equally divided between the Princeton Baptist Medical Center campus and the Trinity Medical Center campus. These rotations provide training in mammography, vascular and interventional radiology, neuroradiology, nuclear medicine, diagnostic ultrasound, gastrointestinal radiology, genitourinary radiology, chest radiology and skeletal radiology. Four months are provided at Medical Center East, an integrated institution within our residency program for specific rotations in vascular ultrasound and mammography. Six months of clinical diagnostic radiology rotations are performed outside of BHS teaching hospitals. Four months are at The Children's Hospital for pediatric radiology; two months are at the University of Alabama Hospital for cardiac radiology. Five months of non-clinical rotations are offered to senior residents. One of these months of elective time are provided for the Armed Forces Institute of Pathology Radiologic Pathologic Correlation Course, and two months are offered for preparation of research projects, teaching file cases, as well as resident and medical student teaching. Didactic courses in radiologic physics are offered at the University of

## FOR MORE INFO, CONTACT:

Baptist Health System, Inc.  
Dianne Champion,  
Medical Education Housestaff Coordinator  
701 Princeton Avenue, S.W., 3 East  
Birmingham, AL 35211-1399  
205-783-3190 or 800-715-0277  
dianne.champion@bhsala.com

Alabama Hospital as one or two-hour lectures over approximately eight weeks each year. Residents are required to take the American College of Radiology In-Training Examination each year.

## CONFERENCES AND EDUCATIONAL ACTIVITIES

Throughout the four-year program, weekday conferences are held or supervised by the radiological staff at each hospital. Other conferences include monthly residents' conferences, interdepartmental residents' conferences, pathology-radiology conferences, and guest lecturers. Frequent informal clinical and pathological correlation with radiologic findings are conducted on cases of special interest. The residents are also invited to attend the various medical and surgical conferences and grand rounds.

The American College of Radiology film and laser disc files and CD-ROM teaching files are available at both BHS teaching hospitals for resident review. Other teaching materials include the BHS Radiology Teaching File with a computerized index and the Radiology Reprint File. In addition to the ACR file, various laser disc and video tape programs are available.

## RADIOLOGY FACULTY AND HOSPITAL FACILITIES

Nineteen diagnostic radiologists are involved with resident education in our program in addition to the faculty at the University of Alabama Hospitals and the Children's Hospital. Faculty subspecialization includes fellowship training in interventional radiology, neuroradiology, abdominal imaging and nuclear medicine. In addition, three radiation therapists and a radiation physicist are available for consultation.

State-of-the-art imaging equipment placing both Princeton and Trinity among the top in the country is present. Approximately 75,000 diagnostic radiological studies are done each year at each hospital, including approximately 600 arteriograms and 300 interventional procedures at each hospital. Radiology residents participate daily in the routine radiological examinations and their interpretation, and each resident will perform approximately 500 angiograms and other interventional radiological procedures during their training. During the nuclear medicine rotations, residents become familiar with scintillation cameras, total body scanners, dosage calculation and administration, patient positioning, instrumentation and interpretation.

## THE AMERICAN ASSOCIATION FOR THE SURGERY OF TRAUMA

Chicago, IL

**FOR MORE INFO, CONTACT:**

Sharon Gautschy  
800-789-4006 312-202-5013 fax  
sgautschy@aast.org  
bolandee@upmc.edu  
www.aast.org

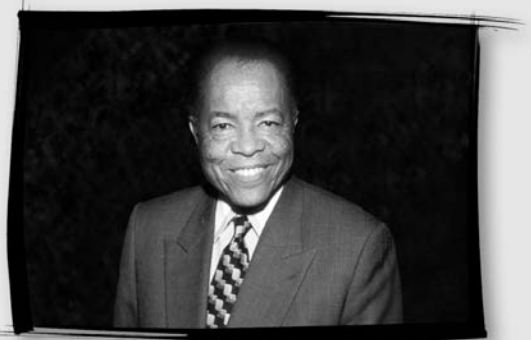


The American Association for the Surgery of Trauma (AAST) was formed to foster advances in the care of the injured and acutely ill surgical patients. The AAST affords a forum for surgeons of multiple disciplines to exchange knowledge pertaining to research, practice and training in acute care and trauma surgery, investigate and teach methods of prevention and management of injuries of all types, establish lectureships, and scholarships to stimulate research and learning.

Students who are interested in a career in trauma and acute care surgery are encouraged to attend the AAST Annual Meeting in September each year. Scholarships are available to cover meeting registration, hotel and a small per diem per day. For more information on how to apply, please go to [www.aast.org](http://www.aast.org).

Research scholarships are available to doctors interested in trauma and acute care surgery research. Applications are due by February 15th each year with the awarding of the scholarship in July. Most scholarships are for one year and are funded at \$40,000. AAST offers a number of special scholarships year-to-year.

Visit AAST's website, [www.aast.org](http://www.aast.org), for the latest in trauma resources, educational information, abstract submission process for the Annual Meeting and the Journal of Trauma, employment opportunities, available scholarships, membership requirements and numerous other resources.



A mentor is...  
An advisor... a friend...  
a role model...  
a person to turn to...  
a coach... a teacher...  
a resource.

**Everyone needs one.  
Especially physicians in training.**

Whether you are a medical student or are just beginning surgical residency, you are already facing challenges and uncertainty, promises and opportunities. **We can help.**

We offer a program that puts you in touch with experienced orthopaedic surgeons who have been where you are—and can help guide you where you want to go.

Learn more about the mentoring program sponsored by the American Academy of Orthopaedic Surgeons and how we can play a role in your future.

Contact us online at [mentor@aaos.org](mailto:mentor@aaos.org), or give us a call at **800-626-6726**.

**AAOS**  
AMERICAN ACADEMY OF  
ORTHOPAEDIC SURGEONS

# BAPTIST HEALTH SYSTEM

Birmingham, AL

## FACTS AT A GLANCE

- 2 Categorical and 5 Preliminary positions available.
- 2 hospital community teaching program provides a wealth of surgical educational opportunities with faculty in almost every surgical area of specialty.
- Participation in research required. Each year residents are required to prepare a research project for presentation and publication.
- Residents have achieved excellent board pass rate record. Residents accepted into excellent Fellowship programs when desired.
- Competitive salary and benefits package. Non-salary benefits include generous book allowance, educational conference allowance, a board certification course in final year and a generous food and housing stipend.

## ROTATION SCHEDULE

### PGY-1

- 8 Months General Surgery
- 4 Months Specialty
  - Plastics
  - Ortho
  - Anesthesia
  - Neuro

### PGY-2

- 8 Months General Surgery
- 4 Months Specialty
  - Trauma
  - Transplant
  - Peds (2 months)

### PGY-3

- 8 Months General Surgery
- 4 Months Specialty
  - Trauma
  - CV/Thoracic
  - ENT
  - Vascular

### PGY-4

- 6 Months General Surgery
- 6 Months Specialty
- Colorectal/Endoscopy (2 months)
- Vascular (2 months)
- Trauma
- GU

### PGY-5

- 12 Months General Surgery
  - 6 Months at Princeton
  - 6 Months at Trinity



**WILLIAM TAPSCOTT, M.D., FACS,**  
Program Director

## OBJECTIVES

Baptist Health System offers two options for training in general surgery; a five-year Categorical program leading to eligibility for examination by the American Board of Surgery, and a Preliminary program offering preparation for further training in a surgery or related specialty. The primary objective of our programs is to provide comprehensive training in surgery to prepare surgeons for clinical practice or for additional specialty training. We strive to achieve excellence in patient care for the full range of surgical disorders and to instill an academic mindset toward clinical practice and an appreciation of basic concepts of surgical research. We believe that optimal training of surgeons occurs in a collegial atmosphere, where patients and professional colleagues are treated with respect and sensitivity to their needs as persons.

## THE PRELIMINARY SURGERY PROGRAM

The Preliminary program is designed to develop judgment, skill and knowledge in the management of problems basic to all fields of surgery. Typically, a resident will be assigned to rotate through six to eight months of general surgery and four-to-six months of electives which are planned to meet the needs of each resident.

## THE CATEGORICAL GENERAL SURGERY PROGRAM

Throughout the training program, residents have close relationships with the clinical faculty in both general surgery and the surgical specialties. On several services, a preceptor style of instruction allows direct contact between junior residents and faculty members. The preceptors are experienced teachers, and provide a rich resource for the residents. On other larger services, senior and junior residents work together as teams. As experience increases, residents are given increasing responsibility for management of patients. We expect this graded responsibility to produce surgeons who are technically proficient, who are knowledgeable and highly competent in pre-and post-operative care, and personally able to relate to patients in a compassionate, effective and responsible way.

## FOR MORE INFO, CONTACT:

Baptist Health System, Inc.  
Valorie Davis, Program Coordinator  
Residency Program in Surgery  
701 Princeton Avenue, S.W.  
4 East  
Birmingham, AL 35211  
205-783-3191 or 800-302-3098  
valorie.davis@bhsala.com

Training is provided primarily within the Baptist Health System at Princeton Baptist Medical Center and Trinity Medical Center, which have a total of 995 beds, including a surgical bed capacity of over 200. More than 16,000 major operations and 11,000 minor and ambulatory surgeries are performed each year. Generally residents are assigned for six months of each year at each hospital. In addition to the chief resident's staff service at each hospital, residents are assigned to two or more private services depending on case loads and training requirements. Pediatric surgery experience is obtained at the Children's Hospital of Alabama and transplantation and trauma at University Hospital. A regular schedule of conferences and bedside teaching by experienced faculty members are regular parts of the weekly program. Basic science conferences are also held regularly from September through May. Residents are typically on call every fourth night.

Residents receive a rich operative experience at the Baptist Health System. Evidence of this is seen in the case numbers:

- Graduating chiefs generally obtain 1400-1600 cases over their five years.
- PGY-1 residents average over 300 cases each.

Each hospital conducts surgical conferences to provide tracking of morbidity and mortality and regular didactic teaching sessions. Additional conferences in medicine, pathology, radiology and pharmacology are held regularly at each hospital. Regular multidisciplinary conferences, such as tumor board, are also available.

Excellent library facilities available at both locations include computer access to literature searches and other on-line programs. A supervised journal club meets regularly.

Numerous opportunities are available for successful completion of research projects within the time constraints of the residency program. Residents must complete a research topic each year for presentation at the annual BHS Resident Research Day. Outstanding projects are selected for presentation at local, regional, or national meetings and financial support is available for such presentations.

## BAYSTATE MEDICAL CENTER

Springfield, MA

**FOR MORE INFO, CONTACT:**

Baystate Med. Ctr. Dept. of Surgery  
Richard B. Wait, MD, Program Director  
759 Chestnut Street  
Springfield, MA 01199  
413-794-5165 413-794-1835 fax  
annette.cummings@bhs.org  
www.baystatehealth.com/education

**RICHARD B. WAIT, M.D.,**



Program Director

Baystate Medical Center's Department of Surgery is proud to be at the forefront of surgical residency education in the United States. With over 40 years of experience, members of our faculty frequently provide leadership on national accreditation, policy, and review boards. The faculty is comprised of more than 50 Board Certified or Board Eligible surgeons, representing literally every subspecialty. Our role in charting the future course of surgical education is as important as our long tradition of academic excellence.

Our program services a unique niche in graduate surgical education. We offer a high volume of cases as well as elective bench and clinical research. Many of our residents have continued their specialty surgical education in recognized fellowships at Mount Sinai and Yale.

The surgical skills lab at BMC employs a variety of simulators to teach residents basic and advanced surgical skills. Individual progress is monitored during both mentored and self-directed training sessions using computer-enhanced and virtual reality training devices. These resources facilitate the acquisition of selected skills prior to their actual clinical application, and greatly enhance the learning experience in the O.R.. A state-of-the-art Human Patient Simulator is used to present a diverse range of clinical scenarios to trainees in the form of interactive simulations that emphasize team training and crisis management. BMC is one of the few training programs in the country to offer residents such rich educational opportunities in a skills lab setting.

In addition to a bi-monthly house staff business meeting our residents participate in a *Resident Leadership Group* meeting every month. This group consists of the four chief residents and representatives of each training level elected by their peers (PGY1-4). Residents use this unrestricted forum to discuss educational and service issues of concern to them and thus direct important issues of their academic and clinical training. We acknowledge the importance of lifestyle during this busy time in your life.

Please visit our website [www.baystatehealth.com/surgresidency](http://www.baystatehealth.com/surgresidency) for more information. We invite you to consider joining our team.

**ROTATION SCHEDULE**

**PGY1**

- 2 months general surgery
- 2 months vascular surgery
- 2 months trauma
- 2 months ICU
- 1 month pediatric surgery
- 1 month transplant
- 1 month thoracic/minimally invasive surgery

**PGY2**

- 3.5 months general surgery
- 2 months vascular surgery

- 1 month ICU
- 1 month transplant
- 2 months pediatric surgery
- .5 month cardiac surgery
- 1 month thoracic/minimally invasive surgery

**PGY3**

- 10 months general surgery
- 6 weeks vascular surgery
- 6 weeks trauma
- 6 weeks ICU
- 12 weeks plastic surgery

- 6 weeks transplant
- 4 weeks endoscopy

**PGY4**

- 28 weeks general surgery
- 7 weeks trauma
- 10 weeks thoracic/minimally invasive surgery
- 3 weeks endoscopy

**PGY5**

- 9 months general surgery
- 3 months vascular surgery

## ST. ELIZABETH'S MEDICAL CENTER

Brighton, MA

**FOR MORE INFO, CONTACT:**

Caritas St. Elizabeth's Medical Center  
Vincenza Gelardi,  
Surgical Education Manager  
Surgical Education Office CMP 2  
736 Cambridge Street  
Brighton, MA 02135  
617-789-2990 617-789-3419 fax  
Vincenza.Gelardi@CaritasChristi.org

The Surgical Residency Program at St. Elizabeth's Medical Center in Boston offers a fully accredited, five-year training program in general surgery. Established in 1948, the program has a proud tradition of training surgeons for both community practice and academia. The program has 20 residents and graduates three Chiefs, over two thirds of whom enter fellowships in various surgical specialties. The program's relatively small size permits close interaction between teaching staff and residents in a congenial atmosphere. More operative experience is provided than in most other programs in the United States; during five years of training, a resident can expect to perform approximately 1,100 procedures as surgeon and gain in-depth experience with common surgical illnesses as well as rare and unusual cases. Many of the program faculty members are regional or national experts in these areas. The educational curriculum has recently been completely revamped to provide basic skills training and exposure to the new ACGME mandated competencies.

We believe that teaching is an essential part of residency training, all general surgery residents have the opportunity to serve as clinical instructors to third-year medical students from Tufts University and the University of Massachusetts during core clerkships and to fourth-year medical students doing subinternships from Tufts University.



## ST. JOSEPH MERCY-OAKLAND

Pontiac, MI

**FOR MORE INFO, CONTACT:**

*St. Joseph Mercy-Oakland  
Debra K. Reid, GME Specialist  
44405 Woodward Ave.  
Pontiac, MI 48341  
248-858-3234 248-858-3244 fax  
reidd@trinity-health.org  
www.stjoesoakland.com*

Located in prestigious Oakland County, St. Joseph Mercy-Oakland possesses a strong, community-based surgical residency program with a rich tradition. The close proximity to some of Metro Detroit's finest suburbs offers a very diverse patient population. Two categorical and four preliminary residents are annually given the opportunity to develop their skills in this 400-bed, state-of-the-art facility. A graduate will take part in over 1000 cases, including all ACGME defined category requirements and will graduate as chief resident. Having no competition with fellows, all general surgery and most subspecialty cases are covered by the residency. Residents take in-house call approximately every fourth night for the first four years and home call as chief resident. All rotations are at the primary institution except for a month each of Burn at the Detroit Medical Center and Transplant at St. John Hospital in Detroit. Graduates have gone on to both private practice and a wide variety of fellowships with strong scores on their Board examinations. Competitive salary and benefits are offered as well as an educational stipend. The program strictly adheres to all work hour mandates. The institution maintains clinical affiliations with Wayne State University and St. George's University School of Medicine.

## TUFTS NEW ENGLAND MEDICAL CENTER

Boston, MA

**FOR MORE INFO, CONTACT:**

*Annette Cerulli,  
Surgical Education Manager  
750 Washington Street, Box 437  
Boston, MA 02111  
617-636-5891 617-636-5498 fax  
acerulli@tufts-nemc.org  
<http://www.tufts-nemc.org/surgery/html/resident/default.htm>*

The General Surgery Residency Program at Tufts New England Medical Center (TNEMC) offers outstanding training in all facets of General Surgery in a full-service university hospital. The small size of our program (3 categorical residents per year) and the dedication of our faculty to teaching and mentoring result in a close faculty-resident working relationship. Our residents' performance on the American Board of Surgery examinations (over 95% first-time pass rates on both the qualifying and certifying examinations) and their entry into some of the most competitive post-residency fellowship programs in the country reflect the quality of the training experience. Weekly departmental didactic conferences and individualized self-education programs insure that the trainee's knowledge base is extensive and up-to-date. Our program is fully compliant with all duty hour regulations, and our PGY-1 year is nearly unique in utilizing a PGY-1 night float system that limits on-call nights to about 1 per week, except during the night float rotation (1 month). Research opportunities are abundant and all residents are encouraged, but not required, to take time off for research. Experiences at TNEMC are complemented by very active clinical experiences at local community hospitals and by a senior level trauma experience at a nearby trauma center. Our location in downtown Boston allows our residents to take full advantage of this exciting city.

# YALE-NEW HAVEN MEDICAL CENTER

New Haven, CT

## FACTS AT A GLANCE

- Broad range of surgical experience at 3 integrated hospitals
- 80 hour week, 1 in 7 off, mostly q4 call
- Dynamic new chairman and growing department
- Five categorical residents per year
- Academic program offering research opportunities

## ROTATION SCHEDULE

### 12 ROTATIONS

- 4 General Surgery
- 1 Intensive Care Unit
- 1 Burn Unit
- 1 Vascular
- 1 Transplant
- 1 Pediatric Surgery
- 1 Plastic Surgery
- 1 Urology
- 1 ENT

### 12 ROTATIONS

- 5 General Surgery
- 2 Trauma Surgery
- 1 Transplant
- 1 Cardiothoracic
- 2 Intensive Care Unit
- 1 Vascular

### 7 ROTATIONS

- 3 General Surgery
- 2 Trauma Surgery
- 1 Vascular
- 1 Pediatric Surgery

### 5 ROTATIONS

- 2 General Surgery
- 2 Trauma Surgery
- 1 Transplant

### 5 ROTATIONS

- 5 General Surgery



**WALTER LONGO, M.D.,**  
Program Director

The mission of the General Surgery residency at Yale is to provide superior clinical and academic training to our residents to prepare them to be the surgical leaders and educators of the future.

The General Surgery Residency at Yale-New Haven Medical Center is a five to seven year academic program, accredited by the ACGME, which emphasizes broad clinical training and scholarly activities. Most of our residents conduct laboratory research for two years under the mentorship of one of our faculty members. Clinical rotations take place in 3 different hospitals to assure a wide variety and depth of surgical experience. Yale has one of the largest endocrine surgical services in the country under the leadership of our dynamic new chairman, Dr. Robert Udelsman, and sections of gastrointestinal surgery, oncology and trauma/critical care are all strong. There is ample experience in surgical specialties, including vascular, pediatric, transplantation and plastic surgery. Dr. Udelsman has hired seven new faculty members in the past year to augment our dedicated full time faculty, which now numbers more than sixty surgeons.

The Yale program is academically oriented and favors students who have had excellent records in medical school. We look for high achievement in the surgical clerkship and strong letters of recommendation from the Dean and at least three other faculty members, two of which must be surgeons. There is no minimum USMLE score. The personal interview is an important opportunity for students to learn firsthand the particular strengths of the Department, to experience the atmosphere, and to meet our enthusiastic residents. Substantial numbers of women and minorities have completed our training program over the past 25 years. International medical graduates are welcome to apply. All applications must be through the ERAS program. Yale

## FOR MORE INFO, CONTACT:

Yale University School of Medicine  
Walter Longo, MD  
330 Cedar St.  
107 Farnam Memorial Bldg.  
New Haven, CT 06520-8062  
203-785-2616 203-737-5209 fax  
walter.longo@yale.edu  
<http://yalesurgery.med.yale.edu>

surgery residents have been extraordinarily successful. Ninety percent pursue additional fellowship training and most go to their first or second choice program. More than two thirds then continue in an academic career.

The Yale program is at the forefront of changes in work hours and environment mandated by regulatory bodies. Residents work no more than 80 hours per week, have at least one day in seven off duty and generally every fourth night on call. New Haven is an attractive and vibrant city with superb cultural opportunities including world class museums and a wide array of theatrical and musical venues. Recreational choices include boating on Long Island Sound, and hiking, canoeing and skiing both in Connecticut and the more northern parts of New England, which are only a few hours away. New York City can be reached in less than two hours. We hope you will include us in your plans for applications and interviews.

## BAPTIST HEALTH SYSTEM

Birmingham, AL

**FOR MORE INFO, CONTACT:**

Baptist Health System, Inc.  
Lacy Gilliland, Program Coordinator  
817 Princeton Avenue, S.W.  
POB II, Suite 106  
Birmingham, AL 35211  
205-783-7663  
lacy.gilliland@bhsala.com

**STEVEN D. PRESLEY, M.D., FACP,**



Program Director

**OVERVIEW**

The Transitional Year Residency provides the PGY-1 resident with a broad clinical experience as the foundation for future specialty training. A strong emphasis on basic clinical skills serves as the framework around which the resident can tailor the educational experience to achieve individual professional goals.

**THE PROGRAM**

The Transitional Year curriculum is planned jointly by the resident and the Program Director, based on the educational needs and career goals of the individual. Electives are available at each of our two teaching hospitals (Princeton Baptist Medical Center and Trinity Medical Center) with clinical faculty representing virtually every specialty and subspecialty in the medical profession.

Every effort will be made to meet the Transitional Year residents' educational needs through individualized curriculum planning and selection of elective rotations.

An excellent program of didactic lectures and regularly scheduled conferences is a part of the Transitional Year curriculum and active participation in these conferences is required of all residents. Extensive library facilities and computerized educational tools are available at both the Princeton Baptist Medical Center and Trinity Medical Center campuses. Call requirements will depend on the rotation to which the resident is assigned, but is at most approximately every fourth night with alternate weekends generally free of clinical responsibilities.

Transitional Year residents are expected to perform the same clinical duties as other PGY-1 residents at BHS, and are held to high standards of professionalism by our faculty.

**ROTATION SCHEDULE**

- IM (3 months)
- IM subspecialties selected by the resident (3 months)
- Emergency Medicine (1 month)
- General surgery (1 month)
- Ambulatory medicine (1 month)
- Electives (3 months)

## CHILD FAMILY HEALTH INTERNATIONAL

San Francisco, CA

**FOR MORE INFO, CONTACT:**

Lena Dalke, Program Assistant  
415-957-9000 or 866-345-4674  
students@cfhi.org

"This was a great experience to integrate cultural immersion with exposure to medicine." - Resident alumna

"My program really helped me to understand the challenges that the people and healthcare practitioners have to deal with on a regular basis." - MS4 alumna

Since 1992 Child Family Health International has been working at the grassroots level to advance quality healthcare for all by addressing the community-specific needs of the underserved. Our medical and pre-med student programs are led by local practitioner-experts, and focus on service learning and cultural competency in a health setting.

- 4 or 8 week rotations
- Medical Spanish courses available
- Access to comprehensive online resources
- For more details visit: [www.cfhi.org](http://www.cfhi.org)

**2007 PROGRAMS**

INDIA: Infectious Disease, Rural Himalayan Rotation, Introduction to Traditional Medicine and HIC & Public Health Challenges--SOUTH AFRICA: HIV/AIDS & Healthcare in Durban--MEXICO: Cultural Crossroads in Health, Tropical Medicine--ECUADOR: Andean Health, Reproductive & Women's Health, Amazon Community Medicine, Urban/Rural Comparative Health--BOLIVIA: Pediatric Medicine--Nicaragua: Biomedical Research

# The New York City Free Clinic: A Model for Comprehensive Free Healthcare

By Deepti Anbarasan, First Year Medical Student, New York University School of Medicine

In 2002, the US spent \$5,267 per person on healthcare. By comparison, the New York City Free Clinic (NYCFC) spends a yearly average of only \$88.94 per patient to provide comprehensive free healthcare services, including specialty referrals, counseling and patient education to uninsured New Yorkers.

Escalating healthcare costs have commoditized health insurance into a luxury that two million New Yorkers lack. Despite the efforts of successful public insurance programs like Medicare, Medicaid, and Family Health Plus, urgent action must be taken to mitigate the disparities in access to healthcare. In an effort to address this crisis, the NYCFC opened its doors in March 2002 at Sidney Hillman Health Center in Manhattan to specifically address the healthcare needs of New York's uninsured.

The NYCFC, an all-volunteer staff of New York University (NYU) medical students, undergraduates, and physicians, believes that high-quality healthcare is the right of all individuals, families and communities, irrespective of socioeconomic or health status. Embracing a team-oriented approach to care, medical students have worked actively with physician volunteers to assess and treat nearly 1,000 New Yorkers through over 1,700 visits since the clinic opened. Additionally, the NYCFC provides an invaluable learning environment wherein physicians and students practice medicine in its purest form and make treatment decisions, regardless of the patient's personal financial status.

The NYCFC is New York's only comprehensive free healthcare clinic, providing at no cost to patients the full range of healthcare services. Through collaborative relationships with the Institute for Urban Family Health, NYU School of Medicine, Bellevue Hospital Center, and NYU Medical Center, the NYCFC provides free primary and specialty care, social services, laboratory testing, and radiology services to all patients. The deep commitment of its

organizational partners, volunteer base, and management has allowed the NYCFC to develop an effective, streamlined model of fiscal efficiency, which has since been used to establish free clinics in other communities. The NYCFC has worked with several other medical schools in New York and throughout the country to establish free clinics for the uninsured and underserved.

The NYCFC has been widely acclaimed a success and an essential resource for New Yorkers. Publications such as the Village Voice and Service Matters have recognized the NYCFC for the uniquely comprehensive services it provides. The New York Press named the NYCFC the best free clinic in New York. As one patient states, "The NYCFC is a fantastic service to the community because it is very hard to get good healthcare today. I get top of the line care, supervised by the best people in their specific expertise. The NYCFC gives people peace of mind, security that there are doctors to help. Getting free healthcare is unheard of, especially in this maze of New York City's health services. The NYCFC is the best of the best."

Building on the tremendous success of the NYCFC's cost-effective model for comprehensive free care, the NYCFC is now working to expand to care for more uninsured New Yorkers and implement new prevention and outreach strategies. Funding is necessary to cover the costs of additional specialty referrals, patient education materials, and other essentials of the NYCFC's comprehensive free care. All financial contributions made to the NYCFC go directly to providing patient care and are tax-deductible. If interested in learning more about the clinic or in assisting with the clinic's mission of serving the healthcare needs of the uninsured, please visit [www.med.nyu.edu/nycfreeclinic](http://www.med.nyu.edu/nycfreeclinic).

*The views expressed in this article are solely those of the author and do not necessarily reflect the views of GradExchange, Inc.*



# Demand for Vascular Surgeons is **Growing...** Be on the Cutting *Edge* of Medicine

Your vascular surgery career allows you to

- Use revolutionary technology
- Individualize patient treatments
- Establish long-term patient relationships
- Lead a balanced lifestyle



## New streamlined training choices

- Five-year track – Vascular surgery integrated track for trainees who match during medical school
- Six-year track – Vascular surgery certification only, for residents who match in initial surgical training (analogous to the plastic surgery training model)
- Seven-year track – Five years of general surgery and general residency plus two years of vascular surgery with eventual board certification in both surgery and vascular surgery

*Experience this exciting field through a rotation in vascular surgery.*



Complete this coupon to receive a **FREE DVD** featuring leading vascular surgeons discussing their careers.

Talk Directly to a Vascular Surgeon.  
Call 800-258-7188 or email:  
vascular@vascularsociety.org

Name \_\_\_\_\_

Address \_\_\_\_\_

City \_\_\_\_\_ State \_\_\_\_\_ Zip \_\_\_\_\_

Phone \_\_\_\_\_

Email \_\_\_\_\_

Medical School \_\_\_\_\_

For more information visit: [www.VascularWeb.org](http://www.VascularWeb.org), Resident and Fellows section.

Mail to: Society for Vascular Surgery  
633 N. St Clair, 24th Floor, Chicago, IL 60611

# Residency Program

## PROFILE

### FACTS AT A GLANCE

- A major teaching hospital of the Northeastern Ohio Universities College of Medicine (NEOUCOM).
- 150 residents in 10 specialties representing about 70 medical schools in the United States.
- One of the nation's Most Wired and Wireless Hospitals (Hospitals & Health Networks Magazine).
- Top Hospital for Quality and Safety (Leapfrog Group).
- Ranked among U.S. News and World Report's "America's Best Hospitals" and Solucient's "Top 100 Hospitals" in the nation. "Akron's Most Preferred Hospital for Overall Quality and Image" by National Research Corporation.
- Designated Chest Pain Center (Society of Chest Pain Centers and Providers) and Primary Stroke Center with Gold Seal of Approval (JCAHO).
- One of the 99 Best Employers in Northeast Ohio (Employers Resource Council).
- National clinical trials in cancer care, emergency medicine, obstetrics and gynecology, surgery, wound healing, and more.

### RESIDENCY PROGRAMS

- Emergency Medicine
- Family Medicine
- General Surgery
- Internal Medicine Categorical
- Obstetrics and Gynecology
- Orthopaedic Surgery
- Preliminary Internal Medicine
- Psychiatry (NEOUCOM-affiliated program)
- Transitional Year
- Urology (NEOUCOM-affiliated program)
- Breast Surgery Fellowship

**FOR MORE INFO, CONTACT:**  
**Akron General Medical Center**  
Department of  
Medical Education  
Akron, OH 44307  
1-800-732-2852  
[www.akrongeneral.org](http://www.akrongeneral.org)



Akron General Medical Center is a member of the Akron General Health System, one of the area's largest integrated healthcare networks. The Medical Center is a 537-bed, 26 bassinets, adult, tertiary-care, not-for-profit teaching hospital that serves a population of more than 1.2 million people throughout Northeast Ohio.

Akron General is one of Northeast Ohio's most comprehensive centers for learning medicine. Continuing medical education includes memorial lectures, clinical symposiums and medical grand rounds.

The Kenneth Calhoun Research Laboratory and staff of research professionals allows residents to gain advanced experience with scientific research and also explore clinical issues - the real life problems that physicians encounter in practicing medicine.

Akron General Medical Center has regional referral centers in Cardiology, Cancer, Women's Health and Orthopaedics. The Medical Center is also verified as a Level 1 Trauma Center, an Accredited Chest Pain Center, a Primary Stroke Center (Gold Seal of Approval), and offers a Level III Obstetric Service.

We take pride in providing a modern, fully integrated computer network. PACS imaging systems, electronic charting, a wireless network, and a specially designed Web portal allow our physicians and residents to spend more time where they prefer to be - with patients.

**To find out more on what Akron General Medical Center has to offer, call 1-800-732-2852. Visit**

**[www.akrongeneral.org](http://www.akrongeneral.org)** and go to Med Ed & Research. There you'll find information about our facilities and services, stipends and benefits, and highlights about the city of Akron. You can also read more about what our program directors have in store and meet current residents.

Take advantage of our "Ask a Resident" feature: you can find out more about what to expect as a resident from those who are currently enrolled in our program.



**Train in a family friendly atmosphere**

# AMERICAN PSYCHIATRIC ASSOCIATION

**...YOUR PROFESSIONAL PARTNER THROUGHOUT YOUR CAREER**

The American Psychiatric Association is a national medical specialty society, founded in 1844, whose nearly 36,000 physician members specialize in the diagnosis, treatment and prevention of mental illnesses including substance use disorders. *Healthy Minds. Healthy Lives. Care that works to get your mind healthy again so you can lead a healthy life.* Visit APA at [www.psych.org](http://www.psych.org) and [www.healthyminds.org](http://www.healthyminds.org) or call us at 1-888-35-PSYCH or 1-703-907-7300.

*Real Psychiatry: Doctors in Action*, produced by the American Psychiatric Association Department of Minority and National Affairs, is a video program created to provide information to medical students and others interested in the profession of psychiatry. It was also created to increase the number of psychiatrists from different racial, ethnic, and cultural groups.

This 27-minute video features four psychiatrists who share their heartfelt experiences of the day-to-day practice of their profession. These psychiatrists, who represent different ethnicities, geographic regions and areas of professional focus, offer their perspectives and insights on why they chose psychiatry as a career and how their experiences as psychiatrists have enriched their lives.

The program is available in VHS and DVD formats and is available at no charge to medical students, medical schools, and interested organizations.

*Real Psychiatry: Doctors in Action* allows viewers to follow in the footsteps of each participant through a typical day.

To request a DVD or VHS copy (please specify) of the video, *Real Psychiatry: Doctors in Action*, call us at 703/907-7300 or toll free at 888/357-7924 or email [apa@psych.org](mailto:apa@psych.org).

(You may request one free copy. Each additional copy will be \$10 for VHS and \$15 for DVD.)

## Real Psychiatry: Doctors in Action

